

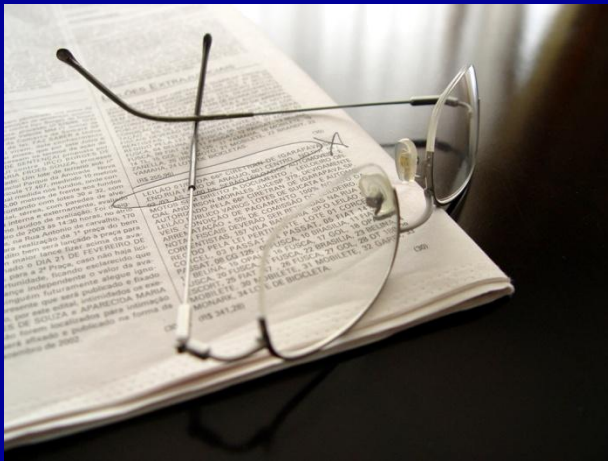


***Welcome to
Supervisory Core
iLinc training***

Overview of Safety & Risk

For technical support: 1-800-810-1349

Resources



- **Learning Objectives**
- **Safety Defined**
- **Deciding on Safety**
- **A Safety Plan**

Purpose

To reinforce your understanding of safety and to support the accurate and timely assessment of safety and the safety decision as well as development of safety plans that protect children in child welfare cases



Safety in a Protective Case



A “Protective” Case is:

- a case undergoing a CPS investigation;**
- a family services case opened for preventive or foster care services while the CPS investigation is still ongoing (prior to the investigation conclusion);**

A “Protective” Case is:

(Continued)

- a family services case in which CPS has indicated a report (some credible evidence found) of alleged child abuse or maltreatment and that prompted the opening of the case for preventive or foster care services;
- a family services case in which a family has been receiving services for reasons unrelated to abuse or maltreatment (e.g. JD/PINS) and a new CPS report is indicated on the family.

Definition of Safe (Protective)

- A child is **SAFE** when there is no immediate or impending danger of serious harm to a child's life or health as a result of acts of commission or omission (actions or inactions) by the child's parent(s) or caretaker(s).



Assessing Safety



Safety Assessment Facts

- All child welfare workers are responsible for the assessment of safety in all cases regarding all children in the case.
- Safety assessments are conducted during every case contact and documented in progress notes.
- The safety assessment is documented in the safety assessment protocol at specified intervals:
 - *within 24 hours of a child fatality occurring and the presence of surviving children in the home;*
 - *within 7 days of the receipt of an oral report from the SCR;*
 - *within 7 days of CPS investigation conclusion, (i.e., within 7 days prior, but not beyond investigation conclusion);*
 - *at every FASP, and*
 - *at case closing.*

Deciding on Safety

- 1. Identify any safety factors currently present in the child's living situation.**
- 2. Apply the safety criteria to determine if the child is in immediate or impending danger of serious harm.**
- 3. Make a safety decision: decide what action, if any, is necessary to protect the child.**
- 4. Develop and implement a safety plan.**

Safety Assessment – Step #1

- **Identify any safety factors currently present in the child's living situation.**



Safety Assessment – Step #2

- **Determine, based on the identification of one or more safety factor(s) and application of the criteria, if any safety factors, alone or in combination, have created a situation in which the child is in immediate or impending danger of serious harm.**



Safety Assessment – Step #3

- Identify which safety decision most accurately reflects the current safety status of children/youth.



Safety Assessment – Step #4

- develop and implement a safety plan, if a child is in immediate or impending danger of serious harm, which controls the danger and protects the child from what is placing him or her in immediate or impending danger of serious harm for as long as the danger exists**

Safety in Nonprotective Cases



Definition of Safety (Nonprotective)

- The decision that one or more children, parents, caretakers, family members, or community members are not likely to be in immediate or impending danger of serious harm, or will not likely face a serious threat to their emotional, physical, or developmental well-being.

Safety Assessment Process– Nonprotective Cases

- Identify any safety issues present.**
- Decide which, if any, rise to the level of immediate or impending danger of serious harm.**
- Identify key protecting factors that offset the immediate or impending danger of serious harm.**

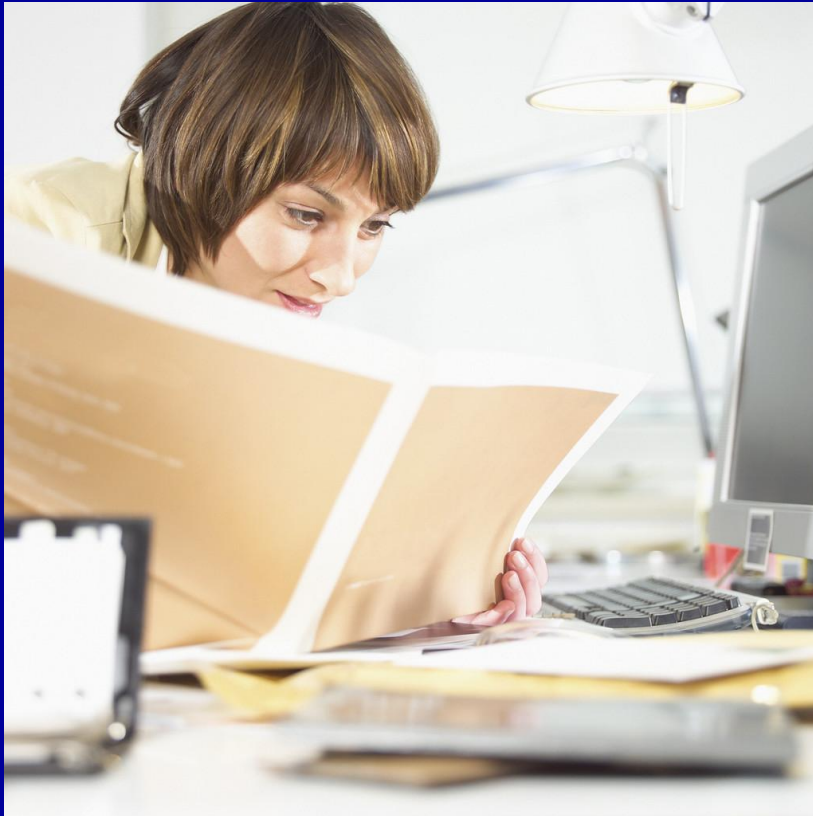
Summary

- **We reviewed protective and nonprotective safety.**
- **One of your fundamental responsibilities is to promote accurate and timely safety assessments and the development of safety plans on your workers' caseloads that protect children.**
- **This training supports your exploration in the classroom sessions.**

Overview of Risk



Resources



- **Learning Objectives**
- **Risk Assessment**

Purpose

To reinforce your understanding of risk and support you in promoting accurate risk assessments in child welfare cases.

Definition of Risk

- The *likelihood* that a child may be abused or maltreated in the future.



Risk Assessment Is...

a process of information-gathering and analysis that examines the inter-relatedness of risk elements affecting family functioning and documents them in the form, manner and time prescribed by OCFS (18 NYCRR428.2.(h)).

Risk Assessment is a Process in which the Caseworker...

- Gathers information on the presence or absence of a set of circumstances and behaviors in the parent/caretaker's household(s).**
- Uses the CONNECTIONS system to calculate a risk rating for protective cases.**

Risk Assessment is a Process in which the caseworker...

(Continued)

- Uses that rating to determine the need for services.**
- Develops a service plan that includes services designed to specifically to target the conditions or behaviors that contribute to the risk.**

Risk Assessment Profile

Child Protective Record Summary

File Options Help

Case Name: Hill, Jean INV Stage ID: 25301673 Stage CD:

Case ID: 35300846 Report Date: 1/29/2009

Case Identification	Household Composition	Allegations	Investigative Actions	Investigative Findings	Local Protocol	Safety Assessment	Risk Assess Profile	Progress Notes
---------------------	-----------------------	-------------	-----------------------	------------------------	----------------	-------------------	----------------------------	----------------

Effective Date: Primary Caretaker:

Secondary Caretaker:

Describe the relevant behaviors and/or circumstances:

Question 1:

1. Total prior reports for adults and children in RAP family unit:

Verify System Response is Accurate

No.	Questions 2-6:	Yes	No	
5	Financial resources are mismanaged or limited to the degree that one or more basic family needs are intermittently or chronically unmet.	<input type="radio"/>	<input type="radio"/>	▲
6	Caretaker has, and utilizes, reliable and constructive support and assistance from extended family, friends, or neighbors.	<input type="radio"/>	<input type="radio"/>	▼

No.	Questions 7-15:	Primary Yes	Primary No	Secondary Yes	Secondary No	
9	Caretaker's drug use has had negative effects on child care, family relationships, jobs, or arrests, within the past two years.	<input type="radio"/>	<input type="radio"/>	<input type="radio"/>	<input type="radio"/>	▲
10	Caretaker's behavior suggests a mental health problem exists and/or caretaker has a diagnosed mental illness.	<input type="radio"/>	<input type="radio"/>	<input type="radio"/>	<input type="radio"/>	▼

Spell Check:

Preliminary Risk Score:

Preliminary Risk Rating:

Final Risk Rating:

Approval Status: Complete

Risk Ratings

Low Risk

**Moderate
Risk**

High Risk

**Very High
Risk**

Strengths, Needs and Risk Scales...

- are designed to help workers describe how the areas of family functioning generally accepted by the child welfare field as being relevant to our work—children's well-being and family needs—look in each particular family.**

