



# FRANKLIN COUNTY

Justice Data

**USM Muskie School of Public Service**  
Maine Statistical Analysis Center



## Franklin County Facts

- *Franklin County, incorporated in 1838, is in western Maine, bordering Canada and serving as an economic gateway for U.S. and Canadian business.*
- *Historically, the area was known for its dairy farms, lumbering, canning, woolen mills, and shoe manufacturing industries. It is still home to the Androscoggin Paper Mill, as well as newer companies such as Carrabasset Coffee and ICT Group.*
- *2% of Maine's total population resides in Franklin County.*
- *In 2007, the juvenile population of Hancock County was estimated at 5,830<sup>1</sup>.*

Population by Gender and Age, 2007 <sup>2</sup>				
Gender/Age Group	Number	Percent of Total		
		Franklin	Maine	
<b>Total</b>	<b>29,840</b>	<b>100.0%</b>	<b>100.0%</b>	
Male	14,554	48.8%	48.8%	
Female	15,286	51.2%	51.2%	
Under 14	4,717	15.8%	17.3%	
15 to 24	4,886	16.4%	12.9%	
25 to 34	3,358	11.3%	11.3%	
35 to 44	3,995	13.4%	14.7%	
45 to 54	4,672	15.7%	16.5%	
55 to 64	3,935	13.2%	12.6%	
65 to 74	2,252	7.5%	7.5%	
75 to 84	1,554	5.2%	5.3%	
85+	471	1.6%	1.9%	
Median Age	-	40	41	

<sup>1</sup>OJDDP Statistical Briefing Book

<sup>2</sup>Maine Department of Labor, 2007

## Demographic Facts<sup>3</sup>

- Population growth in Franklin County (1.3% increase from 2000 to 2008) has been below the statewide rate (3.3% increase from 2000 to 2008).
- The population is younger overall than the overall statewide average, although it has a smaller average juvenile population.
  - Persons under 18 account for 19.5% of Franklin's County compared with the statewide average of 21.2%.
- Educational attainment is lower than the statewide average.
  - 85.2% of those ages 25+ in Franklin County have graduated from high school compared with the statewide average of 85.4%.
  - 20.9% of those ages 25+ in Franklin County have obtained a bachelor's degree or higher compared with the statewide average of 22.9%.
- Most income measures are lower and poverty is higher than statewide averages.
  - The median household income in Franklin County is \$39,929 compared with a statewide average of \$45,832.
  - 16.0% of Franklin County residents live below the poverty line compared with a statewide average of 12.2%.
- Population density: 17 people per square mile
- Largest cities (population): Farmington (7,557), Jay (4,816), Wilton (4,181)

---

<sup>3</sup> Ibid.

## Adult Criminal Justice Highlights

*ARRESTS HAVE INCREASED AMONG ADULTS, BUT INDEX CRIMES HAVE GENERALLY DECLINED OVER THE PAST 10 YEARS. HOWEVER, THE VIOLENT CRIME RATE HAS RISEN DRAMATICALLY IN 10 YEARS.*

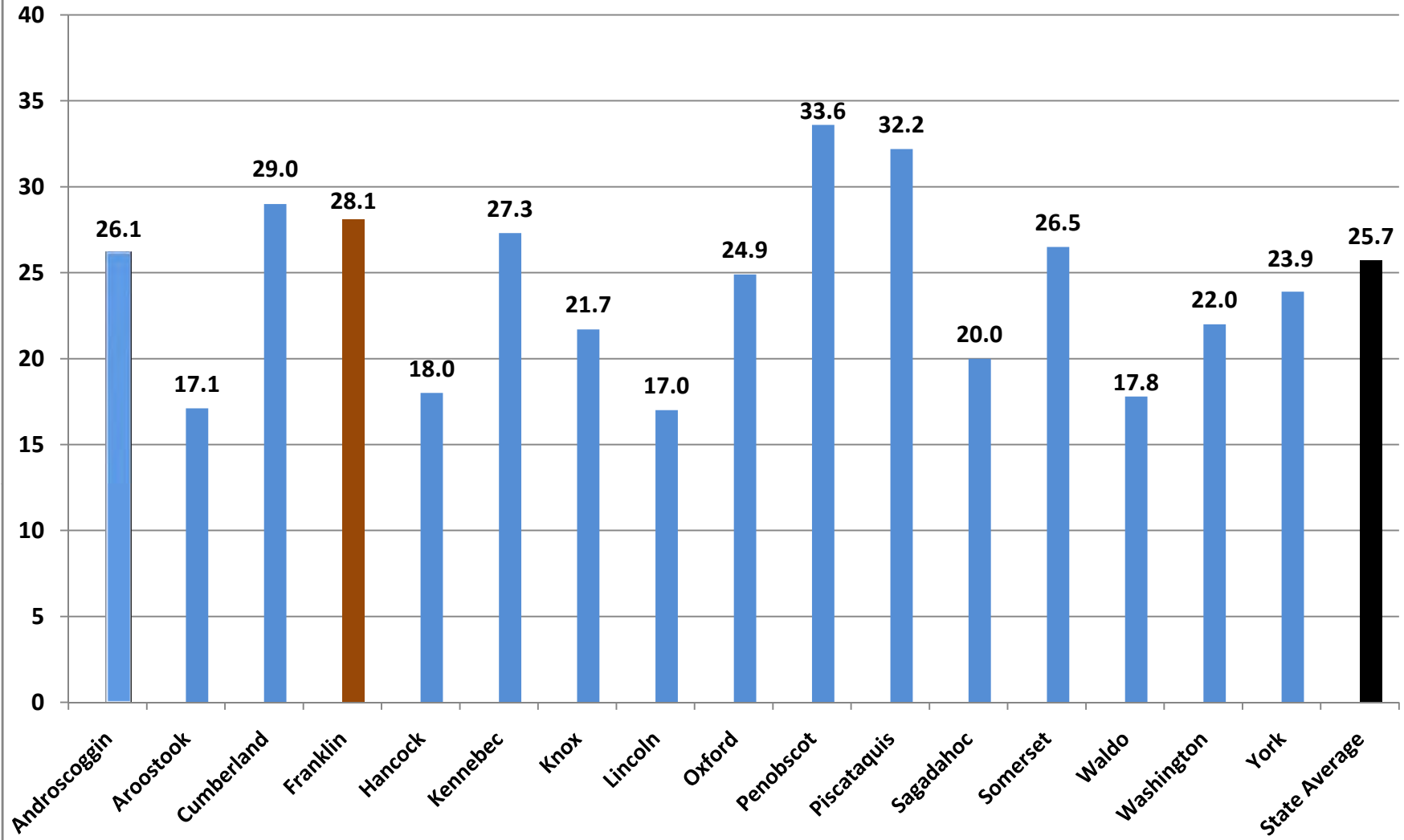
- The adult arrest rate has barely changed over the last 5 years, but has increased 37.2% over the last 10 years.
- In 2007, the index crime rate was 28.1 per 1,000 residents. The statewide rate was 25.7 per 1,000 residents.
- The overall index crime rate has declined 24.1% from 10 years ago. However, the index crime rate was even lower 5 years ago, and has since risen by 9%. Furthermore, the violent crime rate has increased 240% over the last 10 years, although it has been relatively steady since 2003, fluctuating by about 15% from year-to-year.

## Juvenile Justice Highlights

*THE JUVENILE ARREST RATE HAS DECLINED SIGNIFICANTLY IN FRANKLIN COUNTY.*

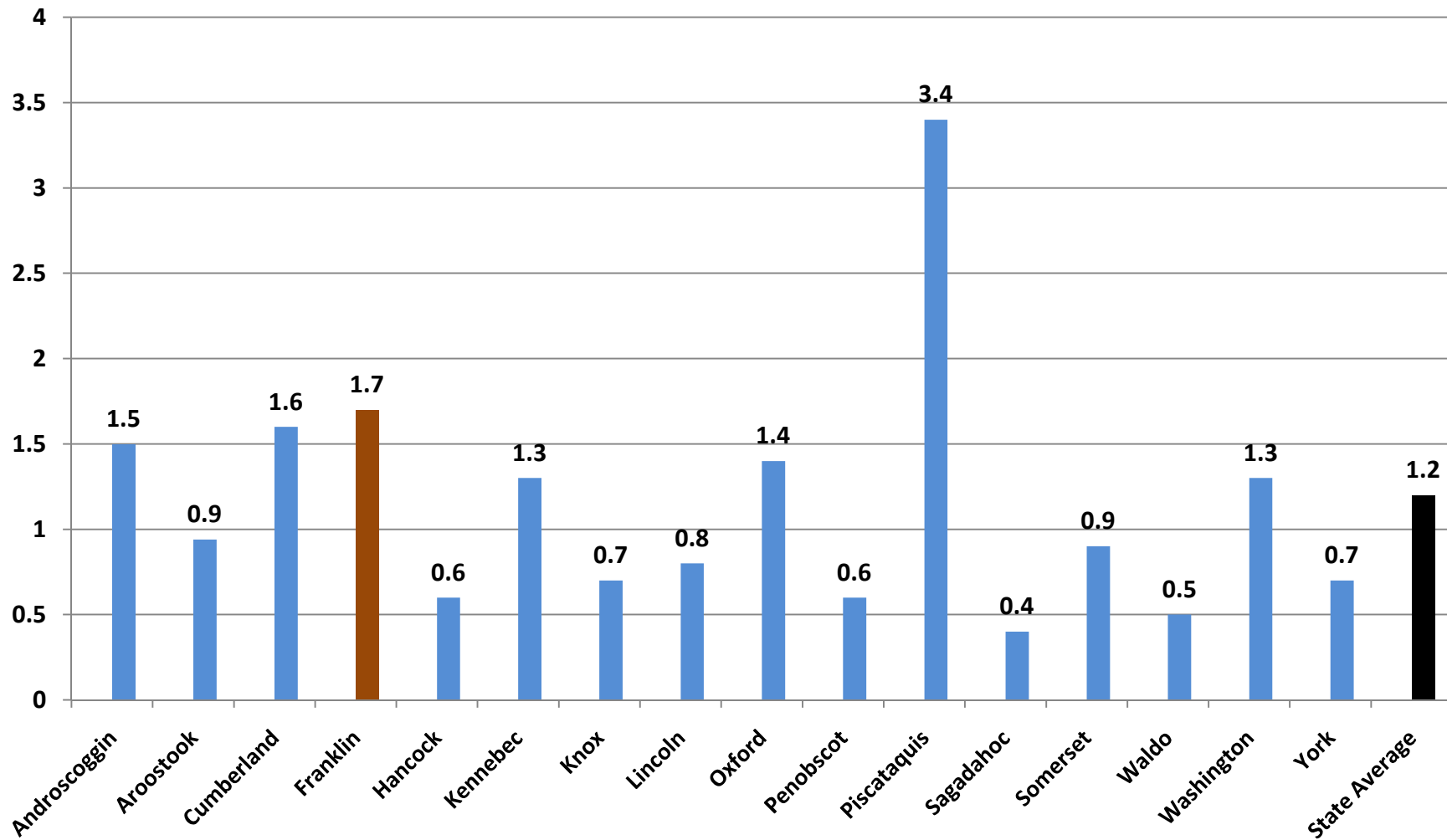
- The juvenile arrest rate has declined by 37.2% over the last 5 years and has decreased 51.3% over the last 10 years.
- In 2005, the rate of juveniles adjudicated for the first time was 9.3 per 1,000 residents. This was higher than the statewide average of 8.4 per 1,000 residents.
- In 2005, the juvenile recidivism rate was 26%. This is comparable to the statewide average of 27% in 2005.

## Index Crimes per 1,000 Residents, County Comparisons, 2007 (Total Population)

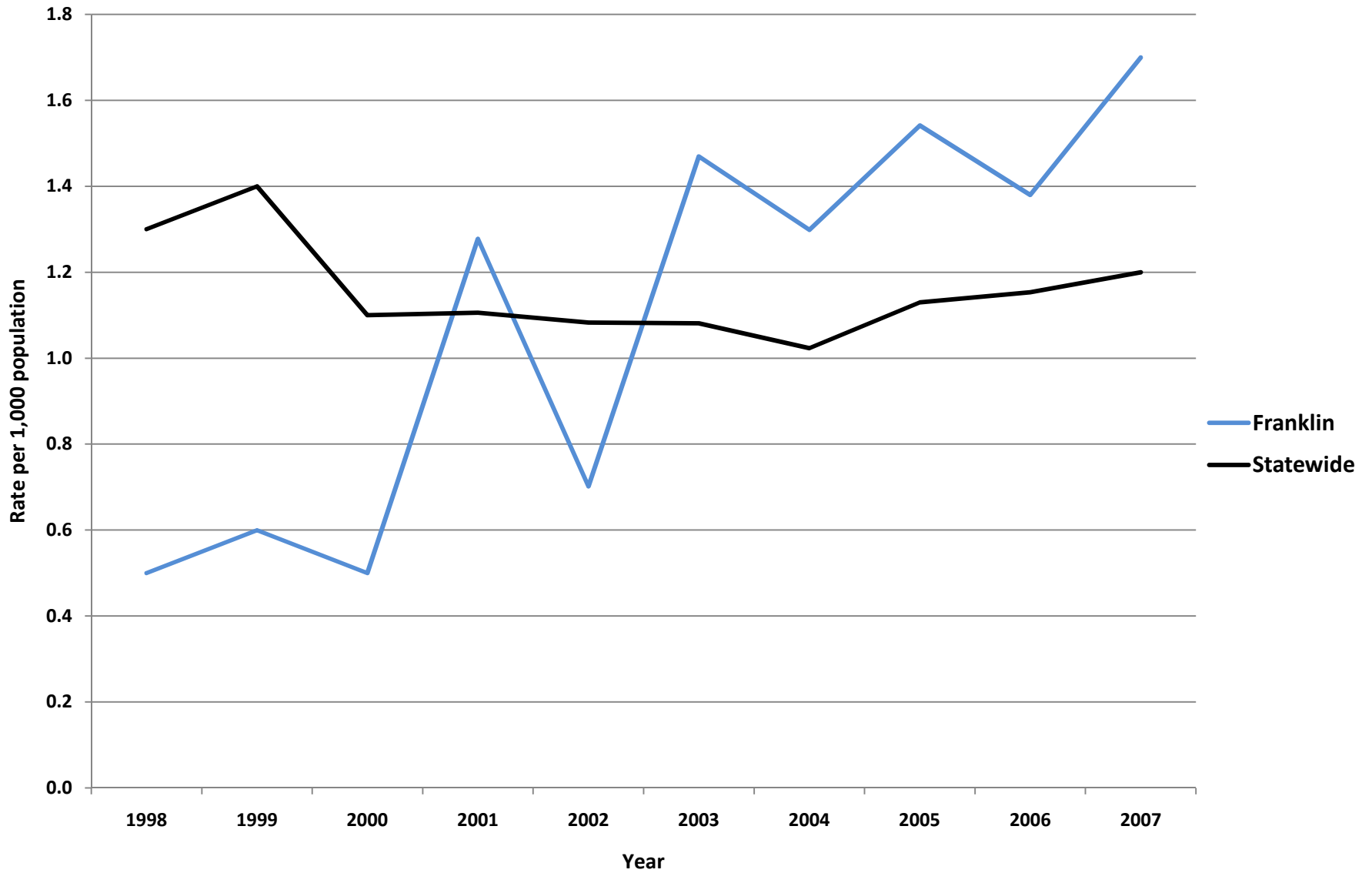


## Violent Crimes per 1,000 Residents, County Comparisons, 2007

(Total Population)

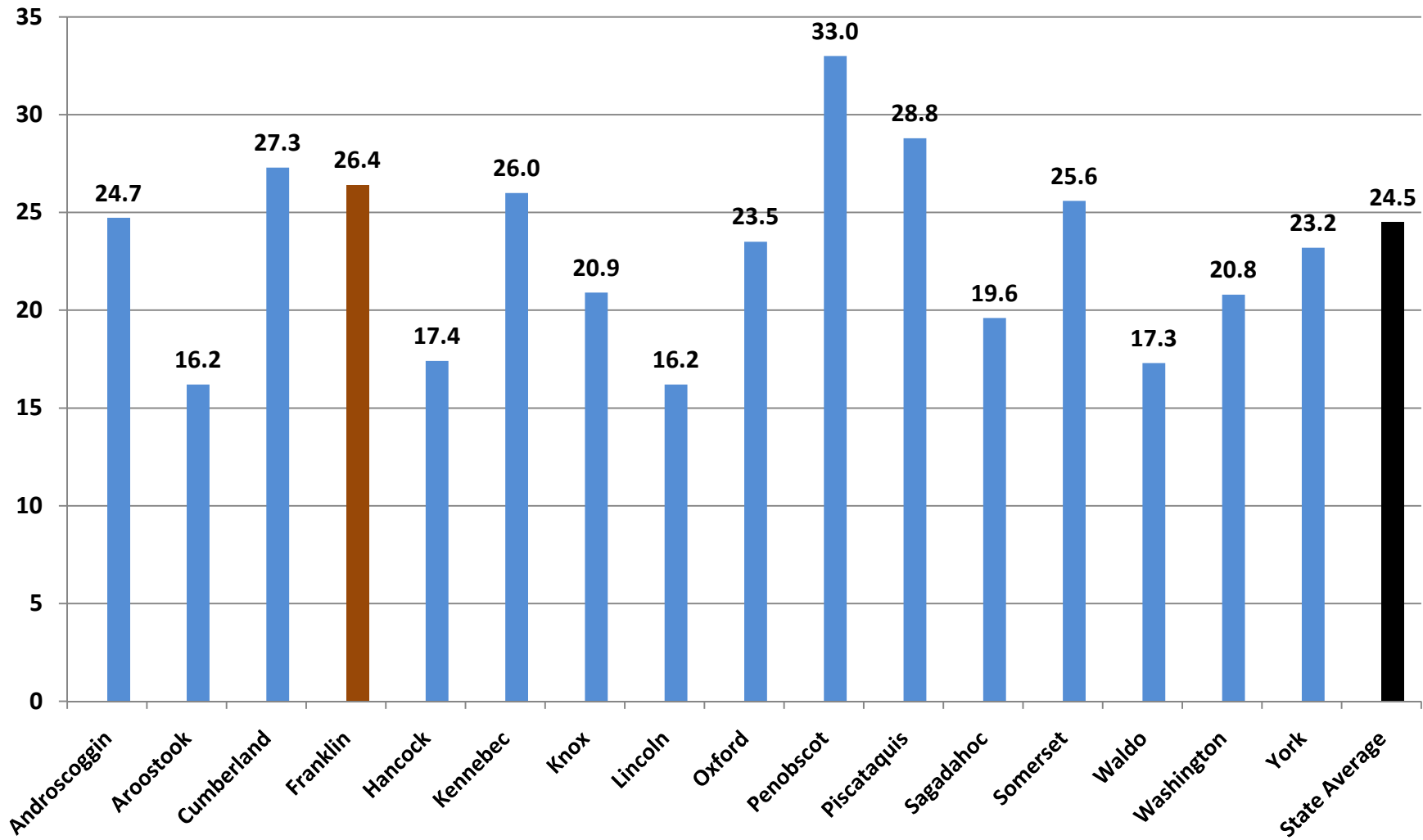


### Franklin - Violent Crimes per 1,000 Residents (Total Population)



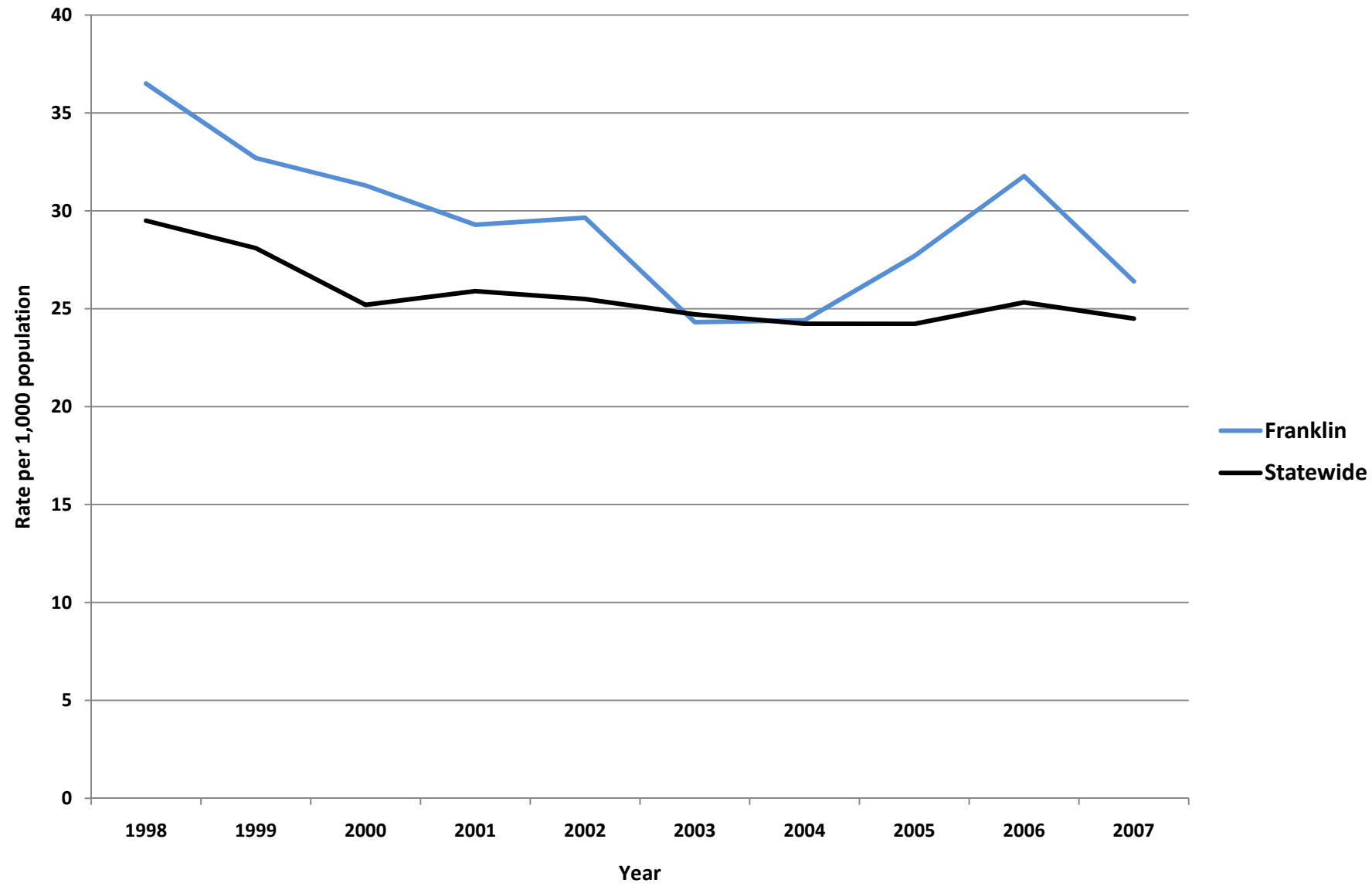
## Property Crimes per 1,000 Residents, County Comparisons, 2007

(Total Population)

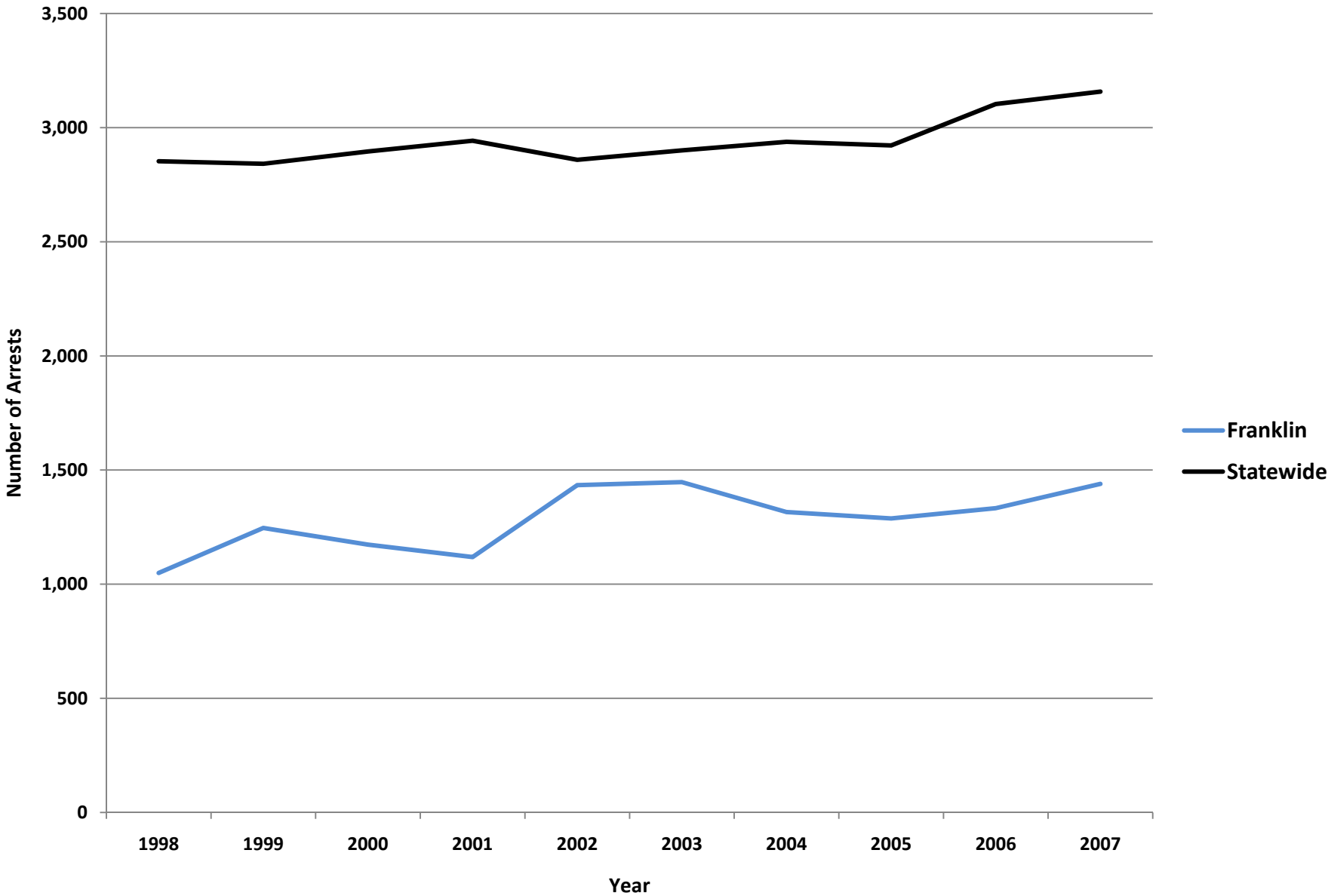




### Franklin - Property Crimes per 1,000 Residents (Total Population)



### Franklin - Adult Arrests vs. Statewide Average



Franklin - Adult Crime Statistics (2007)			
	Overall	Male	Female
Adult Arrests 2007	1,439	1,123	316
5-Year % Change	-0.6%	-1.7%	3.9%
10-Year % Change	37.2%	33.7%	51.2%
Crime Rates (2007)			
<b>Index Crimes 2007 (per 1,000 pop.)</b>	28.1	Crime Rates are calculated using both Adult & Juvenile Arrests	
5-Year % Change	9.0%		
10-Year % Change	-24.1%		
<b>Violent crimes 2007 (per 1,000 pop.)</b>	1.7		
5-Year % Change	15.7%		
10-Year % Change	240.0%		
<b>Property crimes 2007 (per 1,000 pop.)</b>	26.4		
5-Year % Change	8.6%		
10-Year % Change	-27.7%		
Adult Arrests by Type (2007)			
	Adult - Overall	Adult - Male	Adult - Female
<a href="#">Murder &amp; Non-negligent Manslaughter</a>	0	0	0
<a href="#">Manslaughter by Negligence</a>	0	0	0
<a href="#">Forcible Rape</a>	2	2	0
<a href="#">Robbery</a>	0	0	0
<a href="#">Aggravated Assault</a>	42	40	2
<a href="#">Burglary, Breaking &amp; Entering</a>	27	25	2
<a href="#">Larceny-Theft (except Auto Theft)</a>	94	67	27
<a href="#">Motor Vehicle Theft</a>	3	2	1
<a href="#">Other Assaults</a>	160	116	44
<a href="#">Arson</a>	2	1	1
<a href="#">Forgery &amp; Counterfeiting</a>	10	3	7
<a href="#">Fraud</a>	43	16	27
<a href="#">Embezzlement</a>	0	0	0
<a href="#">Stolen Property: Buying, Receiving, Possessing</a>	3	1	2
<a href="#">Vandalism</a>	36	31	5
<a href="#">Weapons: Carrying, Possessing, etc.</a>	3	3	0
<a href="#">Prostitution &amp; Commercialized Vice</a>	0	0	0
<a href="#">Sex Offenses</a>	19	19	0
<a href="#">Drug Abuse Violations</a>	210	175	35
<a href="#">Gambling</a>	0	0	0
<a href="#">Offenses Against Family &amp; Children</a>	3	0	3
<a href="#">Driving Under the Influence</a>	192	145	47
<a href="#">Liquor Laws</a>	85	68	17
<a href="#">Drunkenness</a>	9	8	1
<a href="#">Disorderly Conduct</a>	46	43	3
<a href="#">All Other Offenses (Except Traffic)</a>	450	358	92
<b>Total</b>	<b>1,439</b>	<b>1,123</b>	<b>316</b>

Franklin- Juvenile Crime Statistics (2007)			
	Overall	Male	Female
<b>Juvenile Arrests 2007</b>	167	136	31
5-year % change Juvenile arrests	-37.2%	-32.7%	-51.6%
10-year % change Juvenile arrests	-51.3%	-53.7%	-36.7%
Juvenile Justice System Outcomes			
	Rate	Number	
<a href="#">Referrals</a>	38.58 per 1,000 population	112	
<a href="#">Diversions</a>	62.50 per 100 referrals	70	
<a href="#">Adjudications</a>	59.38 per 100 adjudications	38	
Juvenile Arrests by Type (2007)			
	Juvenile Overall	Juvenile Male	Juvenile Female
<a href="#">Murder &amp; Non-negligent Manslaughter</a>	0	0	0
<a href="#">Manslaughter by Negligence</a>	0	0	0
<a href="#">Forcible Rape</a>	0	0	0
<a href="#">Robbery</a>	0	0	0
<a href="#">Aggravated Assault</a>	3	2	1
<a href="#">Burglary, Breaking &amp; Entering</a>	21	21	0
<a href="#">Larceny-Theft (except Auto Theft)</a>	18	12	6
<a href="#">Motor Vehicle Theft</a>	5	5	0
<a href="#">Other Assaults</a>	18	14	4
<a href="#">Arson</a>	1	1	0
<a href="#">Forgery &amp; Counterfeiting</a>	0	0	0
<a href="#">Fraud</a>	1	1	0
<a href="#">Embezzlement</a>	0	0	0
<a href="#">Stolen Property: Buying, Receiving, Possessing</a>	0	0	0
<a href="#">Vandalism</a>	11	11	0
<a href="#">Weapons: Carrying, Possessing, etc.</a>	0	0	0
<a href="#">Prostitution &amp; Commercialized Vice</a>	1	1	0
<a href="#">Sex Offenses</a>	3	3	0
<a href="#">Drug Abuse Violations</a>	20	19	1
<a href="#">Gambling</a>	0	0	0
<a href="#">Offenses Against Family &amp; Children</a>	0	0	0
<a href="#">Driving Under the Influence</a>	2	0	2
<a href="#">Liquor Laws</a>	24	14	10
<a href="#">Drunkenness</a>	0	0	0
<a href="#">Disorderly Conduct</a>	6	6	0
<a href="#">All Other Offenses (Except Traffic)</a>	28	23	5
<a href="#">Curfew &amp; Loitering</a>	0	0	0
<a href="#">Runaways</a>	5	3	2
<b>Total</b>	<b>167</b>	<b>136</b>	<b>31</b>

**Referral:** Number of juveniles referred to the juvenile justice system.

**Diversion:** Number of juveniles formally diverted by a juvenile community corrections officer (JCCO).

**Adjudication:** Number of juveniles found guilty by a court of law.

## ACKNOWLEDGEMENTS

### ***Author***

William Ethridge, Muskie School Public Policy & Management Graduate Student

### ***Research Supervisor***

Mark Rubin, Research Associate, Muskie School of Public Service

### ***SAC Staff Contributor (Juvenile Statistics)***

Becky Noreus, Research Analyst, Muskie School of Public Service

### ***Editors***

Carmen Dorsey, Director, Muskie School of Public Service Justice Policy Program

George Shaler, Research Associate, Muskie School of Public Service

### ***Format and Design***

Sheri Moulton, Project Assistant, Muskie School of Public Service

### ***Special thanks to the Maine Statistical Analysis Center Advisory Group***

Roxy Hennings, CQI Director, Division of Juvenile Services, Maine Department of Corrections

Denise Lord, Deputy Commissioner, Maine Department of Corrections

Janet Joyeux, Assistant to the Commissioner, Maine Department of Public Safety

Barry Stoodley, Associate Commissioner of Juvenile Services, Maine Department of Corrections

Paul Vestal, Chair, Maine Criminal Justice Commission

Sherry Wilkins, Court Management Analyst, Maine Administrative Office of the Courts

### ***Attribution***

The Maine County Profile Justice Data was created under the auspices of the State Justice Statistics Program, Bureau of Justice Statistics (BJS), Department of Justice (DOJ). Funding was provided by BJS Grant 2008-BJ-CX-K034. The opinions, findings, and conclusions expressed in this publication are those of the authors and do not necessarily reflect the view of the Department of Justice.

*All data included in the criminal justice highlights and the corresponding charts and tables was derived from the [2008 Maine Crime and Justice Data Book](#) and the [Maine Department of Public Safety](#) and the [Maine Department of Corrections Juvenile Recidivism Report](#).*

*Updated: 12/09*

ABOUT THE UNIVERSITY OF SOUTHERN MAINE (USM)  
MUSKIE SCHOOL OF PUBLIC SERVICE

The USM Muskie School of Public Service educates leaders, informs public policy, and strengthens civic life through its graduate degree programs, research institutes and public outreach activities. By making the essential connection between research, practice, and informed public policy, the School is dedicated to improving the lives of people of all ages, in every county in Maine and every state in the nation.

*This report is available on the Justice Policy Program Website:  
<http://muskie.usm.maine.edu/justiceresearch>*