



HANCOCK COUNTY

Justice Data

USM Muskie School of Public Service
Maine Statistical Analysis Center



Hancock County Facts

- *Hancock County, incorporated in 1789, is the “Gateway to Downeast Maine” and home to Acadia National Park.*
- *Ellsworth, a major retail center, is the county seat of Hancock County. This area is a popular tourist destination due to the scenic coastline, mountains, and islands, abundant outdoor recreational opportunities, and park lands.*
- *4% of Maine’s total population resides in Hancock County.*
- *In 2007, the juvenile population of Hancock County was estimated at 10,472¹.*

Population by Gender and Age, 2007 ²			
Gender/Age Group	Number	Percent of Total	
		Hancock	Maine
Total	53,208	100.0%	100.0%
Male	26,126	49.1%	48.8%
Female	27,082	50.9%	51.2%
Under 14	8,319	15.6%	17.3%
15 to 24	6,724	12.6%	12.9%
25 to 34	5,507	10.3%	11.3%
35 to 44	7,483	14.1%	14.7%
45 to 54	9,048	17.0%	16.5%
55 to 64	7,607	14.3%	12.6%
65 to 74	4,324	8.1%	7.5%
75 to 84	2,610	4.9%	5.3%
85+	1,586	3.0%	1.9%
Median Age	-	43	41

¹OJDDP Statistical Briefing Book

²Maine Department of Labor, 2007

Demographic Facts³

- Population growth in Hancock County (2.6% increase from 2000 to 2008) has grown closer to the statewide rate (3.3% increase from 2000 to 2008) in recent years.
- The population is older than the statewide average.
 - Persons under 18 account for 19.7% of Hancock County's population compared with the statewide average of 21.2%.
- Educational attainment is higher than the statewide average.
 - 87.8% of those ages 25+ in Hancock County have graduated from high school compared with the statewide average of 85.4%.
 - 27.1% of those ages 25+ in Hancock County have obtained a bachelor's degree or higher compared with the statewide average of 22.9%.
- Most income measures are slightly lower than the statewide average, but the number of residents living below the poverty line remains lower.
 - The median household income in Hancock County is \$44,632 compared with a statewide average of \$45,832.
 - 9.9% of Hancock County residents live below the poverty line compared with a statewide average of 12.2%.
- Population density: 35 people per square mile
- Largest cities (population): Ellsworth (7,070), Bar Harbor (5,128), Bucksport (4,912)

³ Ibid.

Adult Criminal Justice Highlights

ARRESTS HAVE INCREASED AMONG ADULTS, BUT INDEX CRIMES, THE EIGHT CRIMES THE FBI COMBINES TO PRODUCE ITS ANNUAL CRIME INDEX, HAVE DECREASED IN THE PAST 10 YEARS.

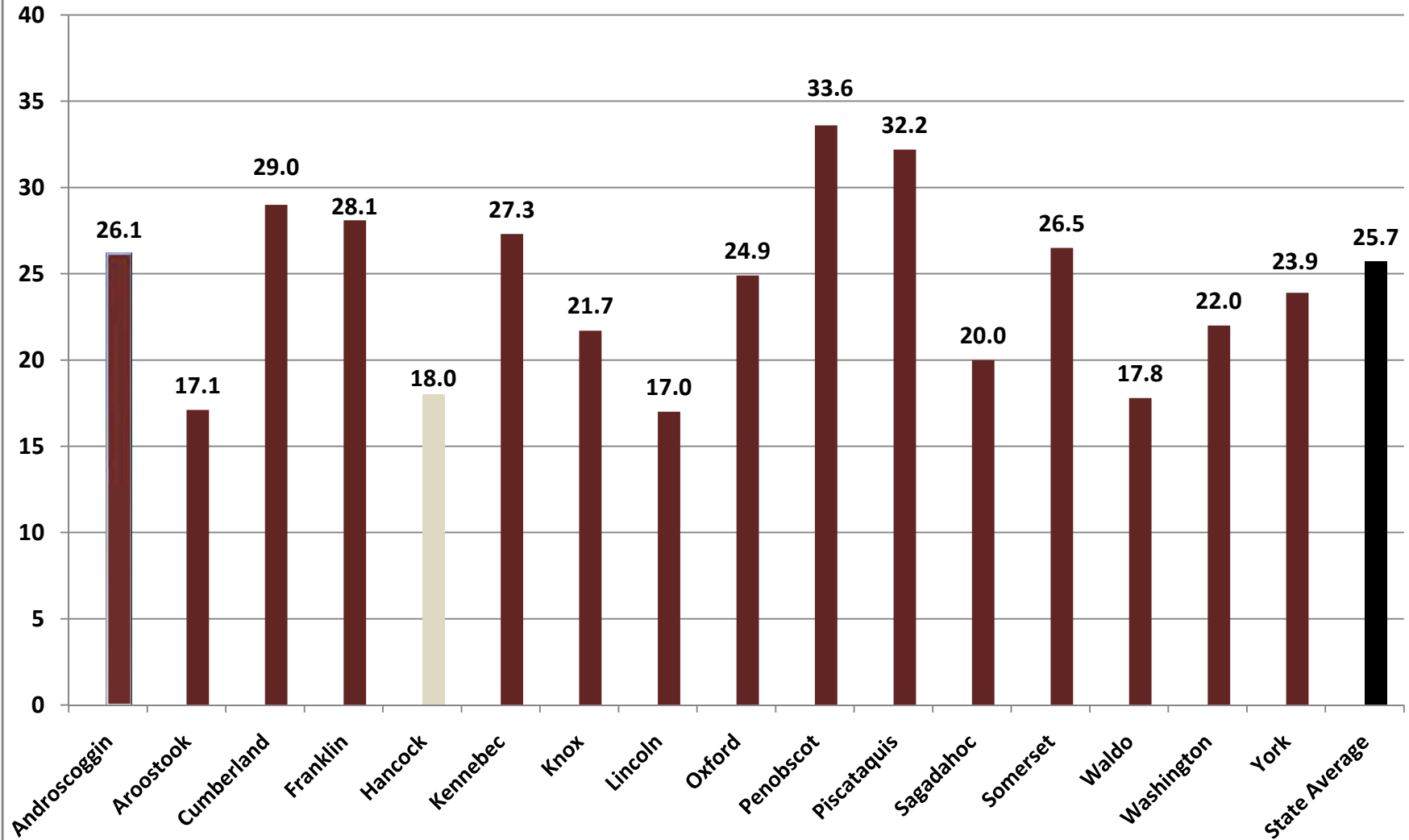
- Adult arrests increased by 6.0% over the last 5 years and increased 21.9% over the last 10 years. Arrests of females increased more rapidly compared to male arrests, rising 22.4% over the last 5 years and 59.1% over the last 10 years. Arrests of males on the other hand, increased only 1.7% over the last 5 years and 13.4% over the last 10 years.
- Index crimes decreased by 22.8% over the last 5 years and decreased 34.5% over the last 10 years. Similarly, violent crime showed a 26.3% decrease over the past 5 years and a 45.5% decrease over the last 10 years. Property crimes decreased by 22.7% over the last 5 years and 34.1% over the last 10 years.
- In 2007, there were 18.0 index crimes per 1,000 residents; this is notably lower than the statewide average of 25.7 index crimes per 1,000 residents.

Juvenile Justice Highlights

JUVENILE ARRESTS HAVE DECLINED OVER THE PAST 10 YEARS, BUT THE COUNTY REGISTERED A HIGH RATE OF FIRST TIME JUVENILE ADJUDICATIONS IN 2005.

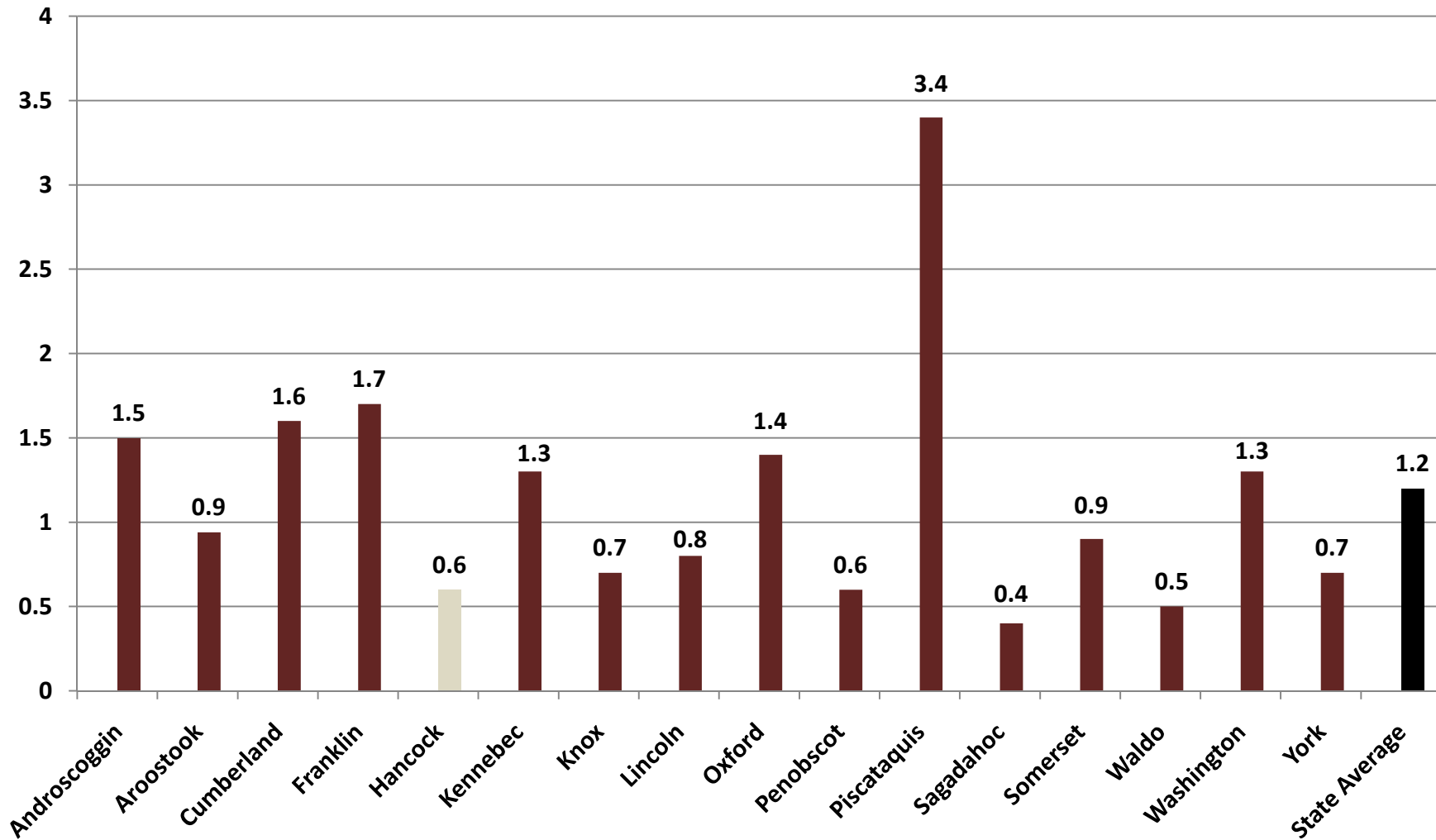
- Juvenile arrests have decreased 24.7% over the past 5 years and decreased 54.0% over the past 10 years.
- The juvenile recidivism rate for the 2005 cohort was 34%. This rate was higher than the statewide average of 27%.
- In 2005, Hancock County had a first time juvenile adjudication rate of 12.4 per 1,000 residents. This rate was greater than the statewide average of 8.4.

Index Crimes per 1,000 Residents, County Comparisons, 2007 (Total Population)

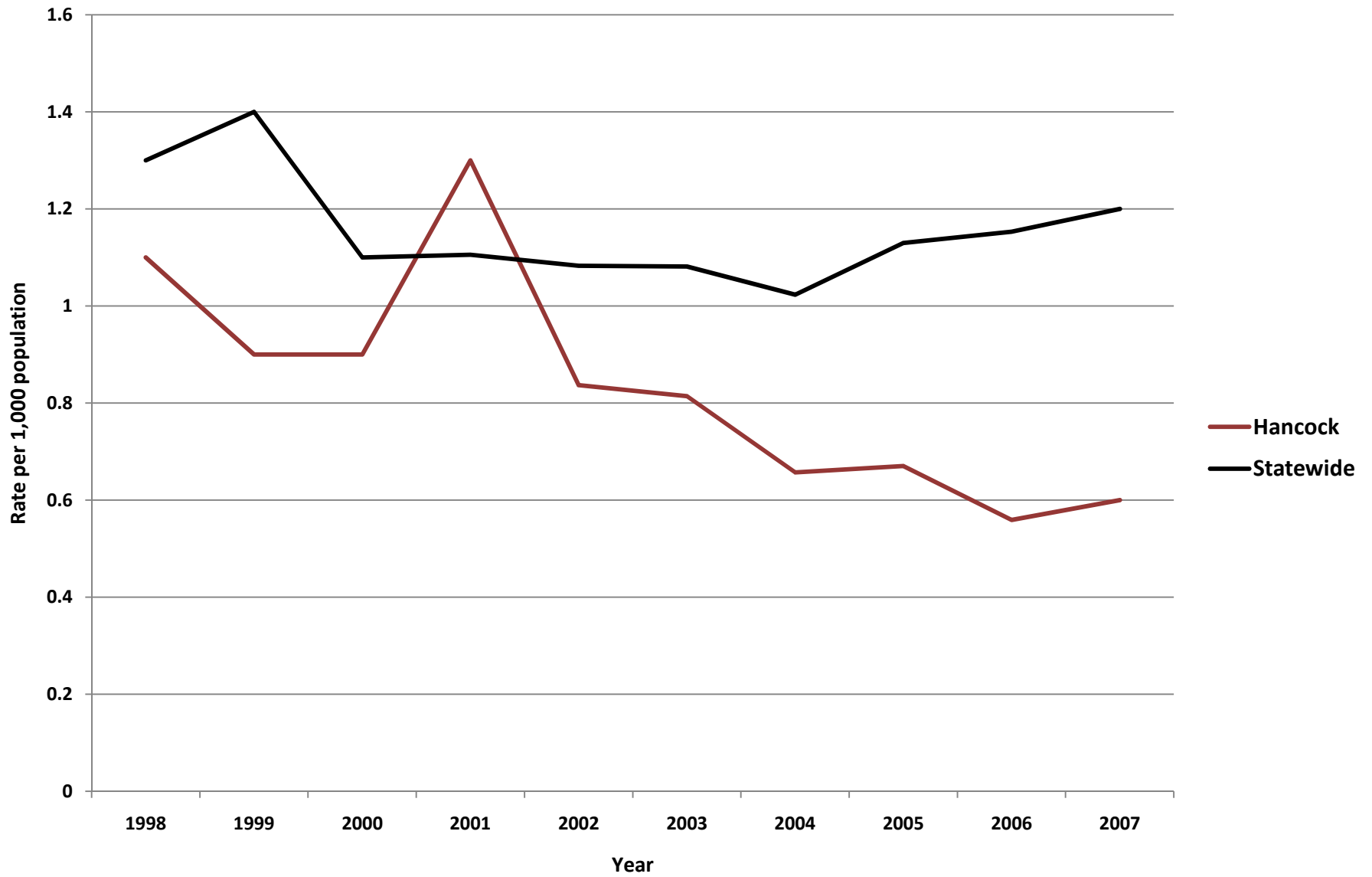


Violent Crimes per 1,000 Residents, County Comparisons, 2007

(Total Population)

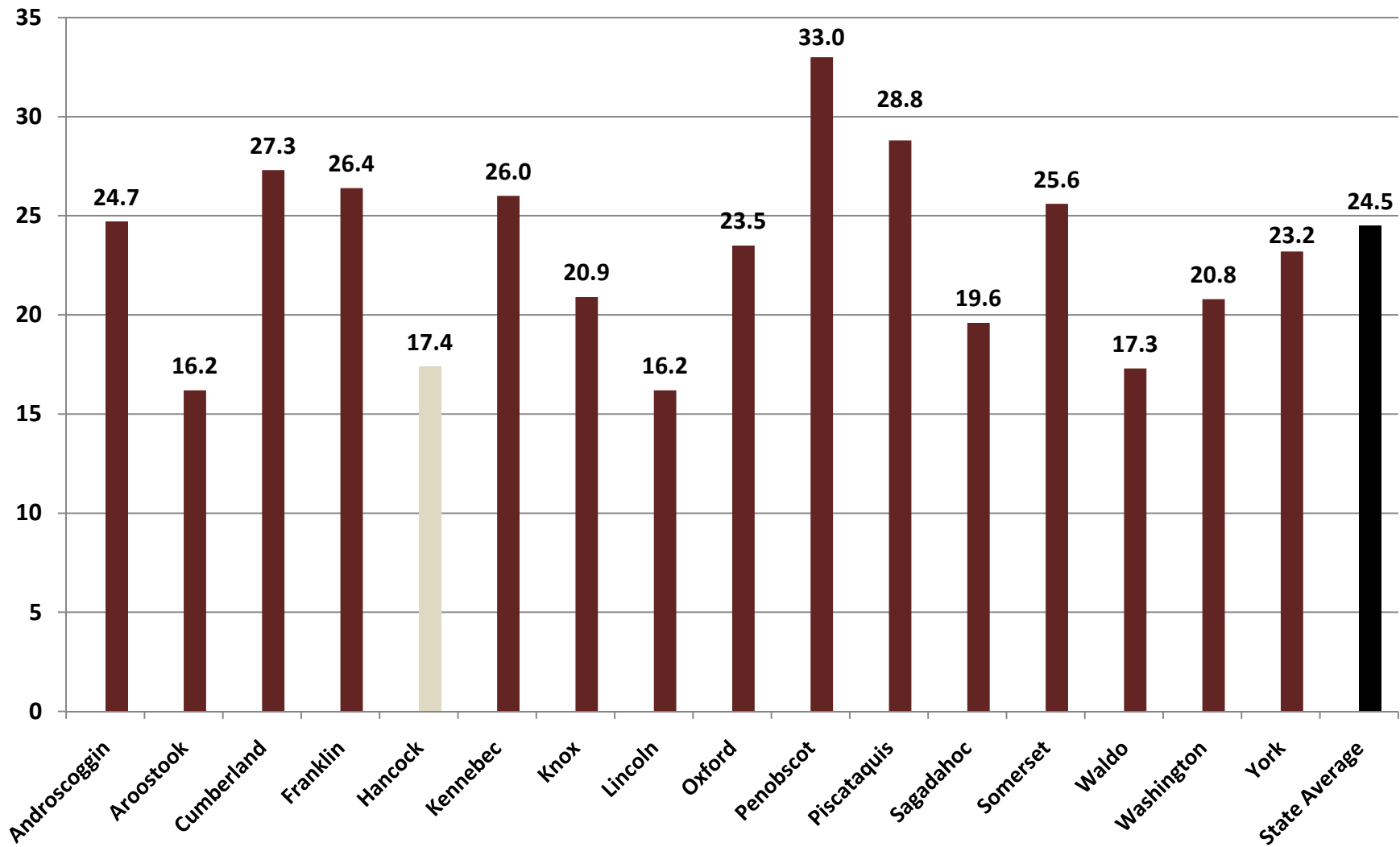


Hancock - Violent Crimes per 1,000 Residents (Total Population)

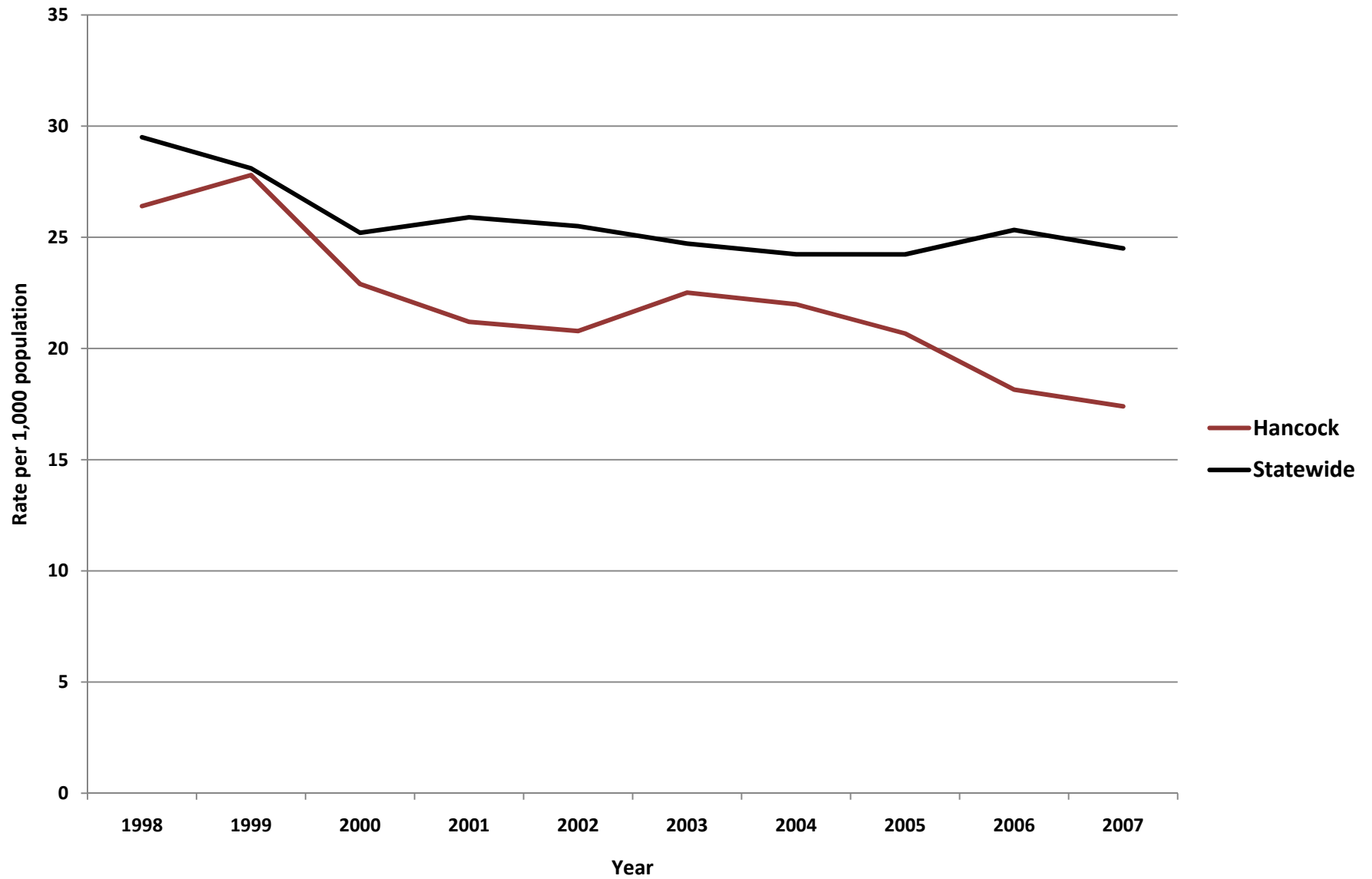


Property Crimes per 1,000 Residents, County Comparisons, 2007

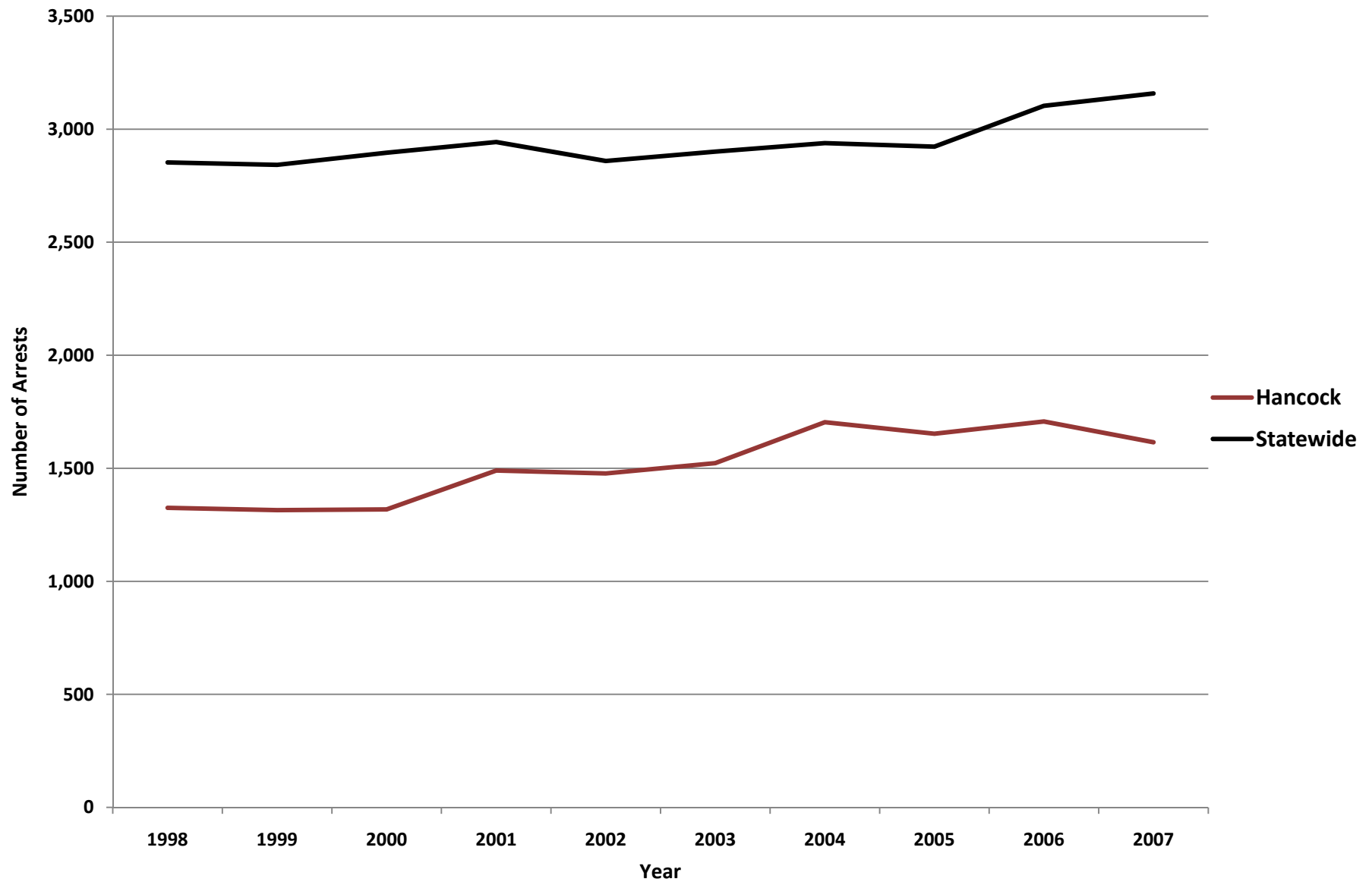
(Total Population)



Hancock - Property Crimes per 1,000 Residents (Total Population)



Hancock - Adult Arrests vs. Statewide Average



Hancock- Adult Crime Statistics (2007)			
	Overall	Male	Female
Adult Arrests 2007	1,615	1,222	393
5-Year % Change	6.0%	1.7%	22.4%
10-Year % Change	21.9%	13.4%	59.1%
Crime Rates (2007)			
Index Crimes 2007 (per 1,000 pop.)	18	Crime Rates are calculated using both Adult & Juvenile Arrests	
5-Year % Change	-22.8%		
10-Year % Change	-34.5%		
Violent crimes 2007 (per 1,000 pop.)	0.6		
5-Year % Change	-26.3%		
10-Year % Change	-45.5%		
Property crimes 2007 (per 1,000 pop.)	17.4		
5-Year % Change	-22.7%		
10-Year % Change	-34.1%		
Adult Arrests by Type (2007)			
	Adult Overall	Adult Male	Adult Female
Murder & Non-negligent Manslaughter	1	1	0
Manslaughter by Negligence	0	0	0
Forcible Rape	2	2	0
Robbery	3	3	0
Aggravated Assault	16	11	5
Burglary, Breaking & Entering	16	13	3
Larceny-Theft (except Auto Theft)	97	63	34
Motor Vehicle Theft	5	4	1
Other Assaults	148	109	39
Arson	3	2	1
Forgery & Counterfeiting	7	4	3
Fraud	13	6	7
Embezzlement	3	2	1
Stolen Property: Buying, Receiving, Possessing	3	3	0
Vandalism	19	19	0
Weapons: Carrying, Possessing, etc.	7	7	0
Prostitution & Commercialized Vice	0	0	0
Sex Offenses	7	7	0
Drug Abuse Violations	190	148	42
Gambling	0	0	0
Offenses Against Family & Children	2	2	0
Driving Under the Influence	346	266	80
Liquor Laws	167	123	44
Drunkenness	1	0	1
Disorderly Conduct	57	48	9
All Other Offenses (Except Traffic)	502	379	123
Total	1,615	1,222	393

Hancock- Juvenile Crime Statistics (2007)			
	Overall	Male	Female
Juvenile Arrests 2007	134	103	31
5-year % change Juvenile arrests	-24.7%	-20.2%	-36.7%
10-year % change Juvenile arrests	-54.0%	-52.8%	-57.5%
Juvenile Justice System Outcomes			
	Rate	Number	
Referrals	24.30 per 1,000 population	124	
Diversions	45.16 per 100 referrals	56	
Adjudications	64.35 per 100 petitions	74	
Juvenile Arrests by Type (2007)			
	Juvenile Overall	Juvenile Male	Juvenile Female
Murder & Non-negligent Manslaughter	0	0	0
Manslaughter by Negligence	0	0	0
Forcible Rape	0	0	0
Robbery	1	0	1
Aggravated Assault	5	3	2
Burglary, Breaking & Entering	14	14	0
Larceny-Theft (except Auto Theft)	20	16	4
Motor Vehicle Theft	1	1	0
Other Assaults	6	5	1
Arson	0	0	0
Forgery & Counterfeiting	1	1	0
Fraud	0	0	0
Embezzlement	0	0	0
Stolen Property: Buying, Receiving, Possessing	0	0	0
Vandalism	9	8	1
Weapons: Carrying, Possessing, etc.	1	1	0
Prostitution & Commercialized Vice	0	0	0
Sex Offenses	0	0	0
Drug Abuse Violations	22	16	6
Gambling	0	0	0
Offenses Against Family & Children	0	0	0
Driving Under the Influence	2	1	1
Liquor Laws	30	19	11
Drunkenness	0	0	0
Disorderly Conduct	6	3	3
All Other Offenses (Except Traffic)	15	15	0
Curfew & Loitering	0	0	0
Runaways	1	0	1
Total	134	103	31

Referral: Number of juveniles referred to the juvenile justice system.

Diversion: Number of juveniles formally diverted by a juvenile community corrections officer (JCCO).

Adjudication: Number of juveniles found guilty by a court of law.

ACKNOWLEDGEMENTS

Author

William Ethridge, Muskie School Public Policy & Management Graduate Student

Research Supervisor

Mark Rubin, Research Associate, Muskie School of Public Service

SAC Staff Contributor (Juvenile Statistics)

Becky Noreus, Research Analyst, Muskie School of Public Service

Editors

Carmen Dorsey, Director, Muskie School of Public Service Justice Policy Program

George Shaler, Research Associate, Muskie School of Public Service

Format and Design

Sheri Moulton, Project Assistant, Muskie School of Public Service

Special thanks to the Maine Statistical Analysis Center Advisory Group

Roxy Hennings, CQI Director, Division of Juvenile Services, Maine Department of Corrections

Denise Lord, Deputy Commissioner, Maine Department of Corrections

Janet Joyeux, Assistant to the Commissioner, Maine Department of Public Safety

Barry Stoodley, Associate Commissioner of Juvenile Services, Maine Department of Corrections

Paul Vestal, Chair, Maine Criminal Justice Commission

Sherry Wilkins, Court Management Analyst, Maine Administrative Office of the Courts

Attribution

The Maine County Profile Justice Data was created under the auspices of the State Justice Statistics Program, Bureau of Justice Statistics (BJS), Department of Justice (DOJ). Funding was provided by BJS Grant 2008-BJ-CX-K034. The opinions, findings, and conclusions expressed in this publication are those of the authors and do not necessarily reflect the view of the Department of Justice.

All data included in the criminal justice highlights and the corresponding charts and tables was derived from the [2008 Maine Crime and Justice Data Book](#) and the [Maine Department of Public Safety](#) and the [Maine Department of Corrections Juvenile Recidivism Report](#).

Updated: 12/09

ABOUT THE UNIVERSITY OF SOUTHERN MAINE (USM)
MUSKIE SCHOOL OF PUBLIC SERVICE

The USM Muskie School of Public Service educates leaders, informs public policy, and strengthens civic life through its graduate degree programs, research institutes and public outreach activities. By making the essential connection between research, practice, and informed public policy, the School is dedicated to improving the lives of people of all ages, in every county in Maine and every state in the nation.

*This report is available on the Justice Policy Program Website:
<http://muskie.usm.maine.edu/justiceresearch>*