



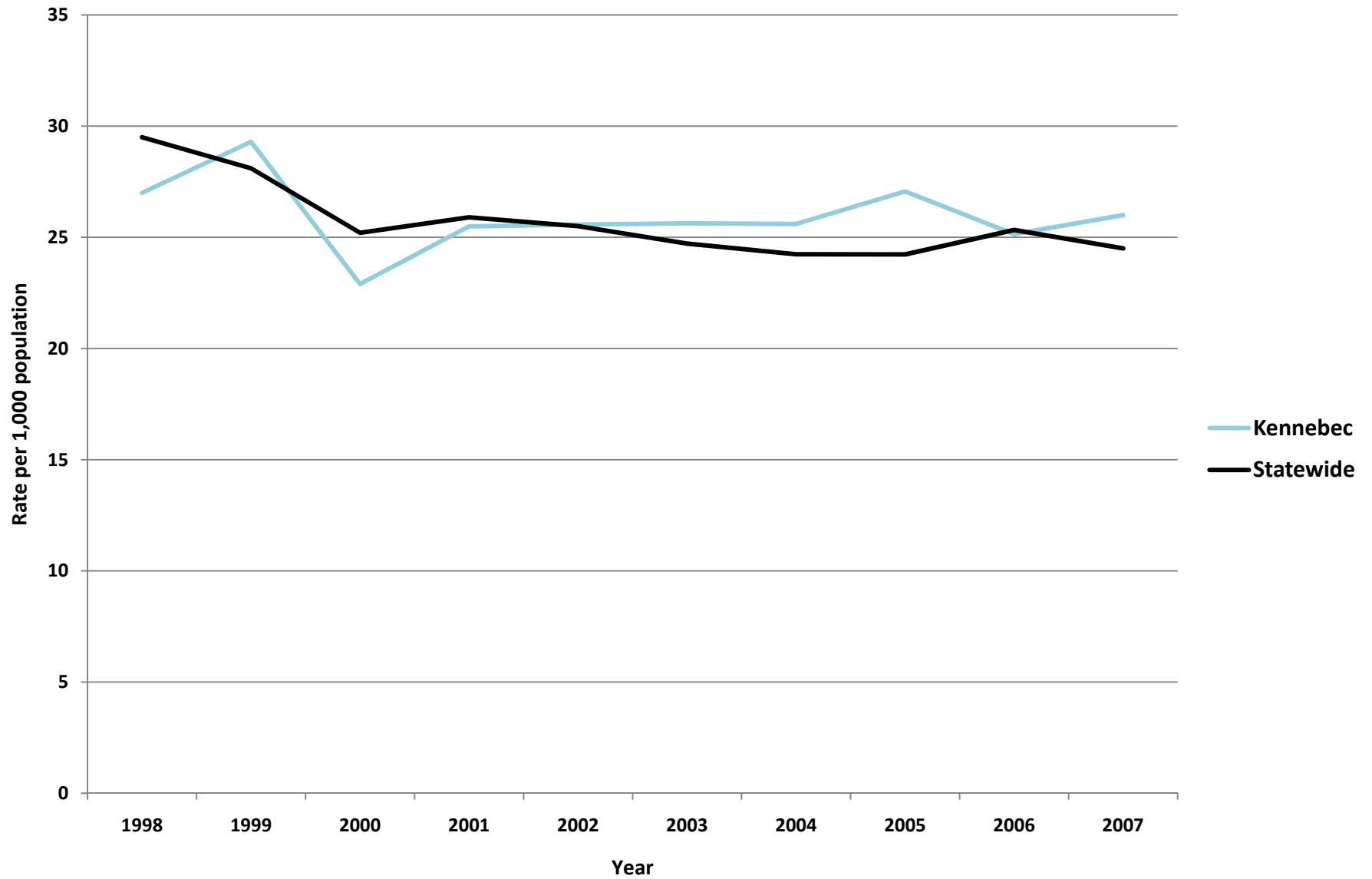
KENNEBEC COUNTY

Justice Data

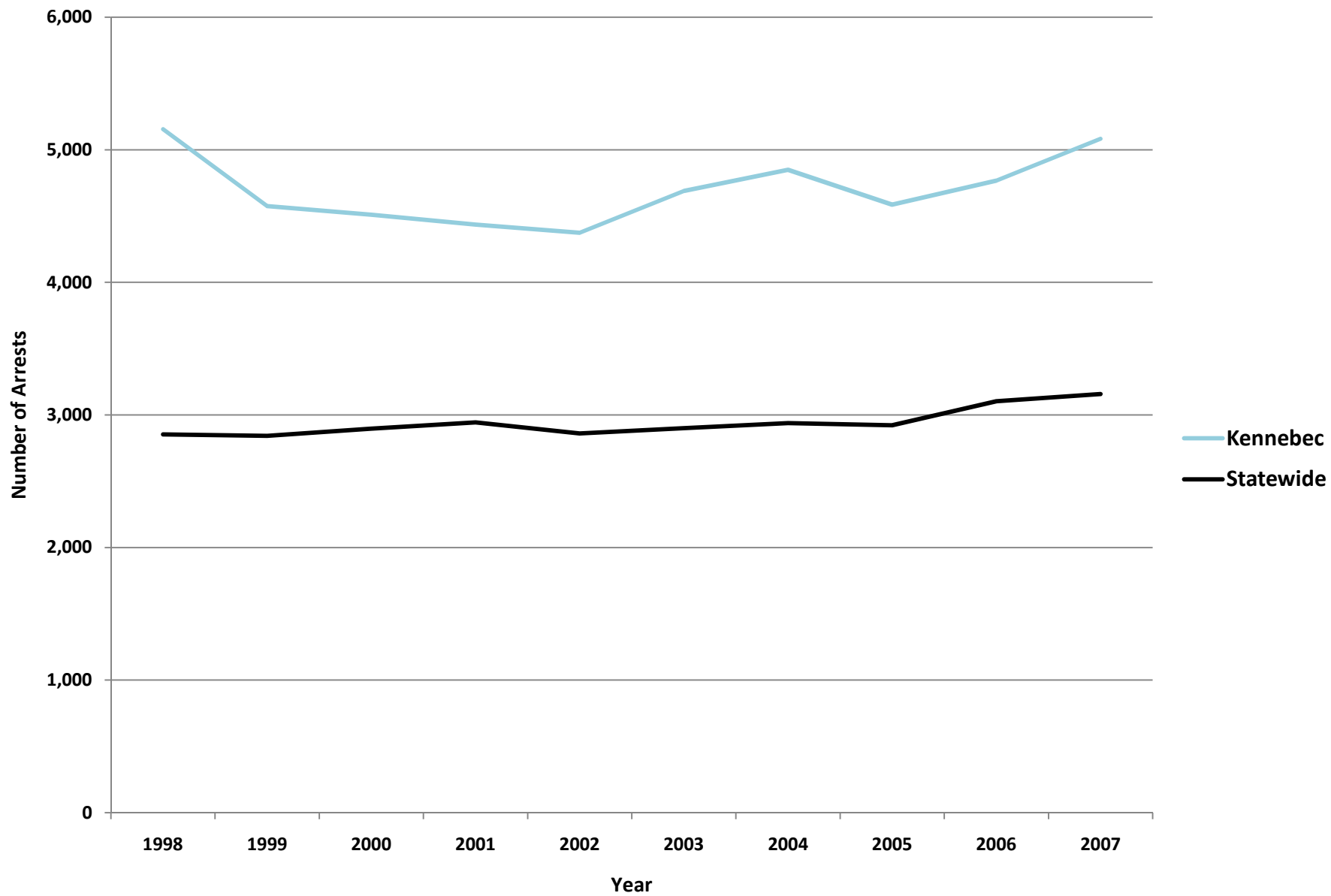
USM Muskie School of Public Service
Maine Statistical Analysis Center



Kennebec - Property Crimes per 1,000 Residents (Total Population)



Kennebec - Adult Arrests vs. Statewide Average



Kennebec - Adult Crime Statistics (2007)			
	Overall	Male	Female
Adult Arrests 2007	5,082	3,642	1,440
5-Year % Change	8.4%	4.5%	19.6%
10-Year % Change	-1.4%	-8.5%	22.9%
Crime Rates (2007)			
Index Crimes 2007 (per 1,000 pop.)	27.3	Crime Rates are calculated using both Adult & Juvenile Arrests	
5-Year % Change	3.5%		
10-Year % Change	-2.2%		
Violent crimes 2007 (per 1,000 pop.)	1.3		
5-Year % Change	74.2%		
10-Year % Change	44.4%		
Property crimes 2007 (per 1,000 pop.)	26.0		
5-Year % Change	1.4%		
10-Year % Change	-3.7%		
Adult Arrests by Type (2007)			
	Adult Overall	Adult Male	Adult Female
Murder & Non-negligent Manslaughter	3	3	0
Manslaughter by Negligence	0	0	0
Forcible Rape	8	8	0
Robbery	13	11	2
Aggravated Assault	73	60	13
Burglary, Breaking & Entering	70	62	8
Larceny-Theft (except Auto Theft)	450	258	192
Motor Vehicle Theft	13	10	3
Other Assaults	625	454	171
Arson	2	0	2
Forgery & Counterfeiting	33	15	18
Fraud	127	72	55
Embezzlement	6	4	2
Stolen Property: Buying, Receiving, Possessing	8	5	3
Vandalism	136	116	20
Weapons: Carrying, Possessing, etc.	13	13	0
Prostitution & Commercialized Vice	0	0	0
Sex Offenses	15	15	0
Drug Abuse Violations	406	296	110
Gambling	0	0	0
Offenses Against Family & Children	5	5	0
Driving Under the Influence	891	646	245
Liquor Laws	389	230	159
Drunkenness	1	1	0
Disorderly Conduct	165	117	48
All Other Offenses (Except Traffic)	1,630	1,241	389
Total	5,082	3,642	1440

Kennebec- Juvenile Crime Statistics (2007)			
	Overall	Male	Female
Juvenile Arrests 2007	627	434	193
5-year % change Juvenile arrests	-31.3%	-33.4%	-25.8%
10-year % change Juvenile arrests	-41.2%	-47.4%	-20.2%
	Rate	Number	
<u>Referrals</u>	35.61 per 1,000 population	440	
<u>Diversions</u>	52.05 per 100 referrals	229	
<u>Adjudications</u>	67.04 per 100 petitions	179	
Juvenile Arrests by Type (2007)			
	Juvenile Overall	Juvenile Male	Juvenile Female
<u>Murder & Non-negligent Manslaughter</u>	0	0	0
<u>Manslaughter by Negligence</u>	0	0	0
<u>Forcible Rape</u>	1	1	0
<u>Robbery</u>	1	1	0
<u>Aggravated Assault</u>	7	5	2
<u>Burglary, Breaking & Entering</u>	28	25	3
<u>Larceny-Theft (except Auto Theft)</u>	122	77	45
<u>Motor Vehicle Theft</u>	5	4	1
<u>Other Assaults</u>	96	59	37
<u>Arson</u>	2	1	1
<u>Forgery & Counterfeiting</u>	1	0	1
<u>Fraud</u>	5	1	4
<u>Embezzlement</u>	0	0	0
<u>Stolen Property: Buying, Receiving, Possessing</u>	1	1	0
<u>Vandalism</u>	39	35	4
<u>Weapons: Carrying, Possessing, etc.</u>	1	1	0
<u>Prostitution & Commercialized Vice</u>	0	0	0
<u>Sex Offenses</u>	8	8	0
<u>Drug Abuse Violations</u>	38	31	7
<u>Gambling</u>	0	0	0
<u>Offenses Against Family & Children</u>	0	0	0
<u>Driving Under the Influence</u>	9	6	3
<u>Liquor Laws</u>	132	76	56
<u>Drunkenness</u>	0	0	0
<u>Disorderly Conduct</u>	20	18	2
<u>All Other Offenses (Except Traffic)</u>	111	84	27
<u>Curfew & Loitering</u>	0	0	0
<u>Runaways</u>	0	0	0
Total	627	434	193

Referral: Number of juveniles referred to the juvenile justice system.

Diversion: Number of juveniles formally diverted by a juvenile community corrections officer (JCCO).

Adjudication: Number of juveniles found guilty by a court of law.

ACKNOWLEDGEMENTS

Author

William Ethridge, Muskie School Public Policy & Management Graduate Student

Research Supervisor

Mark Rubin, Research Associate, Muskie School of Public Service

SAC Staff Contributor (Juvenile Statistics)

Becky Noreus, Research Analyst, Muskie School of Public Service

Editors

Carmen Dorsey, Director, Muskie School of Public Service Justice Policy Program

George Shaler, Research Associate, Muskie School of Public Service

Format and Design

Sheri Moulton, Project Assistant, Muskie School of Public Service

Special thanks to the Maine Statistical Analysis Center Advisory Group

Roxy Hennings, CQI Director, Division of Juvenile Services, Maine Department of Corrections

Denise Lord, Deputy Commissioner, Maine Department of Corrections

Janet Joyeux, Deputy Commissioner, Maine Department of Public Safety

Barry Stoodley, Associate Commissioner of Juvenile Services, Maine Department of Corrections

Paul Vestal, Chair, Maine Criminal Justice Commission

Sherry Wilkins, Court Management Analyst, Maine Administrative Office of the Courts

Attribution

The Maine County Profile Justice Data was created under the auspices of the State Justice Statistics Program, Bureau of Justice Statistics (BJS), Department of Justice (DOJ). Funding was provided by BJS Grant 2008-BJ-CX-K034. The opinions, findings, and conclusions expressed in this publication are those of the authors and do not necessarily reflect the view of the Department of Justice.

All data included in the criminal justice highlights and the corresponding charts and tables was derived from the [2008 Maine Crime and Justice Data Book](#) and the [Maine Department of Public Safety](#) and the [Maine Department of Corrections Juvenile Recidivism Report](#).

Updated: 12/09

ABOUT THE UNIVERSITY OF SOUTHERN MAINE (USM)
MUSKIE SCHOOL OF PUBLIC SERVICE

The USM Muskie School of Public Service educates leaders, informs public policy, and strengthens civic life through its graduate degree programs, research institutes and public outreach activities. By making the essential connection between research, practice, and informed public policy, the School is dedicated to improving the lives of people of all ages, in every county in Maine and every state in the nation.

*This report is available on the Justice Policy Program Website:
<http://muskie.usm.maine.edu/justiceresearch>*