



PENOBSCOT COUNTY

Justice Data

USM Muskie School of Public Service
Maine Statistical Analysis Center



Penobscot County Facts

- *Penobscot was incorporated in 1816 and the county seat is Bangor.*
- *It is one of Maine's largest counties, covering over 3,250 square miles.*
- *Bangor is home to many business and cultural centers. Orono, also in Penobscot County, is home to the main campus of the University of Maine.*
- *11% of Maine's population resides in Penobscot County.*
- *In 2007, the juvenile population of Penobscot County was estimated at 30,561¹.*

Population by Gender and Age, 2007 ²			
Gender/Age Group	Number	Percent of Total	
		Penobscot	Maine
Total	147,971	100.0%	100.0%
Male	72,620	49.1%	48.8%
Female	75,351	50.9%	51.2%
Under 14	24,819	16.8%	17.3%
15 to 24	23,245	15.7%	12.9%
25 to 34	17,984	12.2%	11.3%
35 to 44	20,866	14.1%	14.7%
45 to 54	23,513	15.9%	16.5%
55 to 64	17,677	11.9%	12.6%
65 to 74	10,633	7.2%	7.5%
75 to 84	6,666	4.5%	5.3%
85+	2,568	1.7%	1.9%
Median Age	-	39	41

¹OJDDP Statistical Briefing Book

²Maine Department of Labor, 2007

Demographic Facts³

- Population growth in Penobscot County (2.6% increase from 2000 to 2008) has been below the statewide rate (3.3% increase from 2000 to 2008).
- The overall population is younger than the statewide average; however, the county has a smaller population under 18 than the statewide average.
 - Persons under 18 account for 20.5% of Penobscot County's population compared with the statewide average of 21.2%.
- Attainment of a high school diploma is higher than the statewide average, but college degree attainment is lower.
 - 85.7% of those ages 25+ in Penobscot County have graduated from high school compared with the statewide average of 85.4%.
 - 20.3% of those ages 25+ in Penobscot County have obtained a bachelor's degree or higher compared with the statewide average of 22.9%.
- Most income measures are lower and poverty is higher than average.
 - The median household income in Penobscot County is \$41,348 compared with a statewide average of \$45,832.
 - 13.5% of Penobscot County residents live below the poverty line compared with a statewide average of 12.2%.
- Population density: 33.7 people per square mile
- Largest cities (population): Bangor (31,853), Orono (9,704), Brewer (9,079)

³ Ibid.

Adult Criminal Justice Highlights

THE ADULT ARREST RATE AND INDEX CRIME RATE HAVE REMAINED RELATIVELY STEADY IN PENOBSCOT COUNTY OVER THE PAST 10 YEARS. NONETHELESS, THE COUNTY HAS THE HIGHEST INDEX CRIME RATE IN THE STATE.

- The adult arrest rate has remained steady, increasing only 2.5% over the last 5 years and increasing 4.6% over the last 10 years. However, the female adult arrest rate has grown rapidly compared to the male arrest rate, increasing 34.8% over 5 years and increasing 16.2% over 10 years. Conversely, the male arrest rate registered slight overall declines over those same time periods.
- In 2007, Penobscot County had the highest index crime rate in the state at 33.6 per 1,000 residents. The statewide average is 25.7 per 1,000 residents.
- The index crime rate has remained relatively steady over the past few years, increasing 8.3% over the last 5 years and only increasing 2.1% over the last 10 years. The violent crime rate showed a fairly pronounced decline, decreasing 18.2% over the last 5 years and decreasing by 40% over the last 10 years.

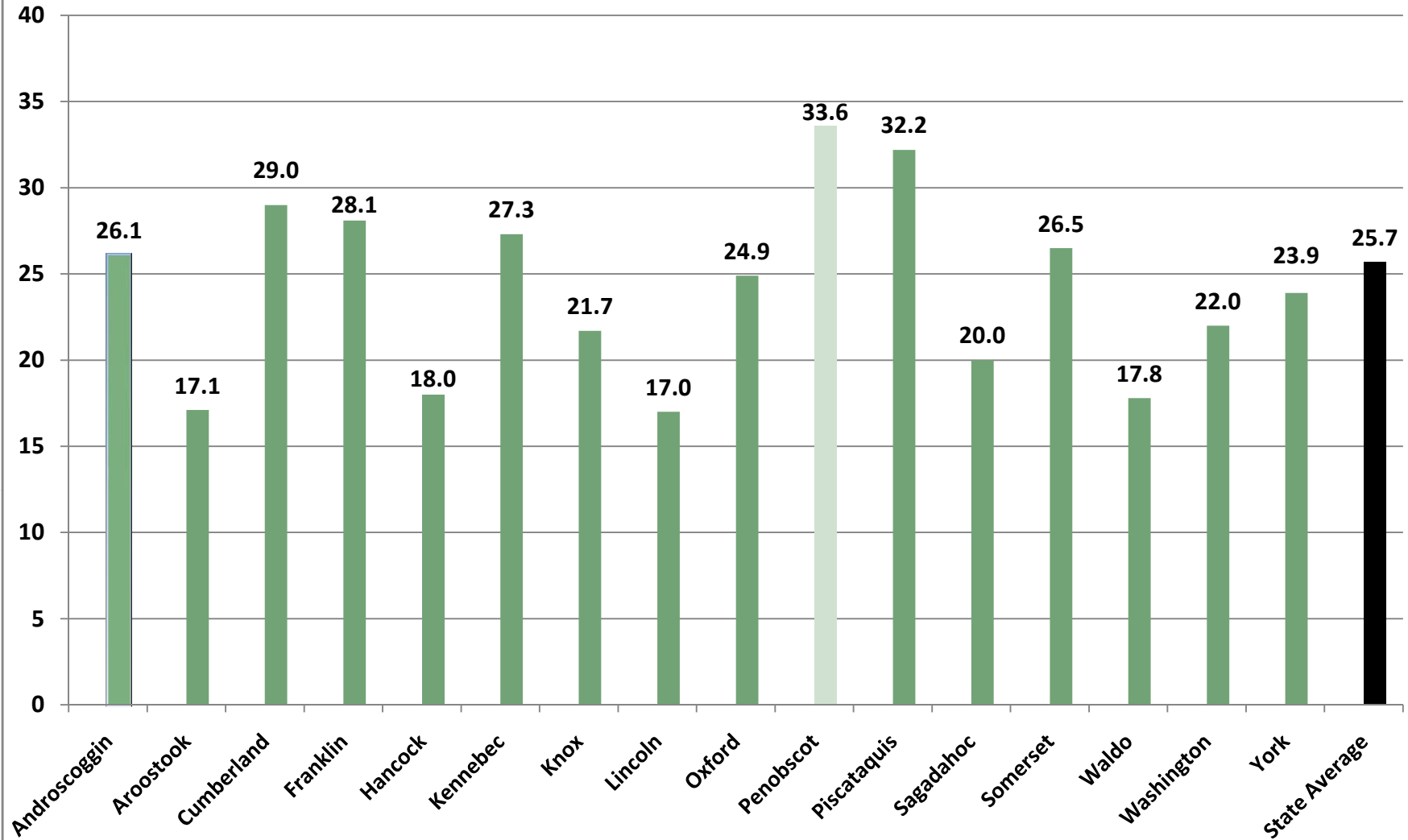
Juvenile Justice Highlights

JUVENILE ARRESTS HAVE DECLINED OVER THE PAST 10 YEARS IN PENOBSCOT COUNTY. HOWEVER, IN 2005, THE COUNTY REPORTED A RELATIVELY HIGH NUMBER OF FIRST TIME JUVENILE ADJUDICATIONS COMPARED TO THE STATEWIDE AVERAGE.

- The juvenile arrest rate has declined by 12.1% over the last 5 years and declined by 45.8% over the last 10 years.
- In 2005, the rate of juveniles adjudicated for the first time was 9.8 per 1,000 residents. This is greater than the statewide average of 8.4 per 1,000 residents.
- In 2005, the juvenile recidivism rate was 28%. This is comparable to the statewide average of 27% in 2005.

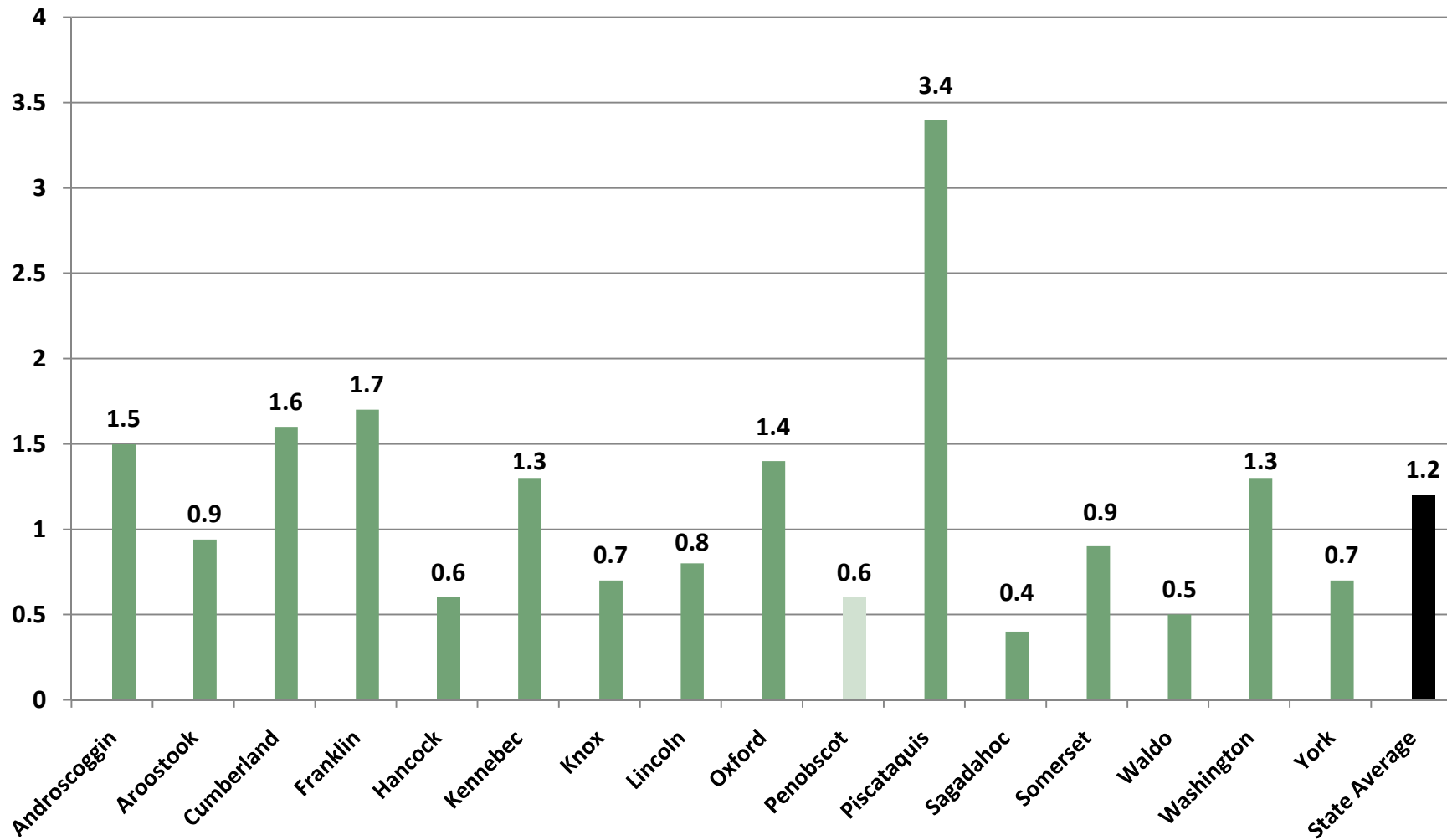
Index Crimes per 1,000 Residents, County Comparisons, 2007

(Total Population)

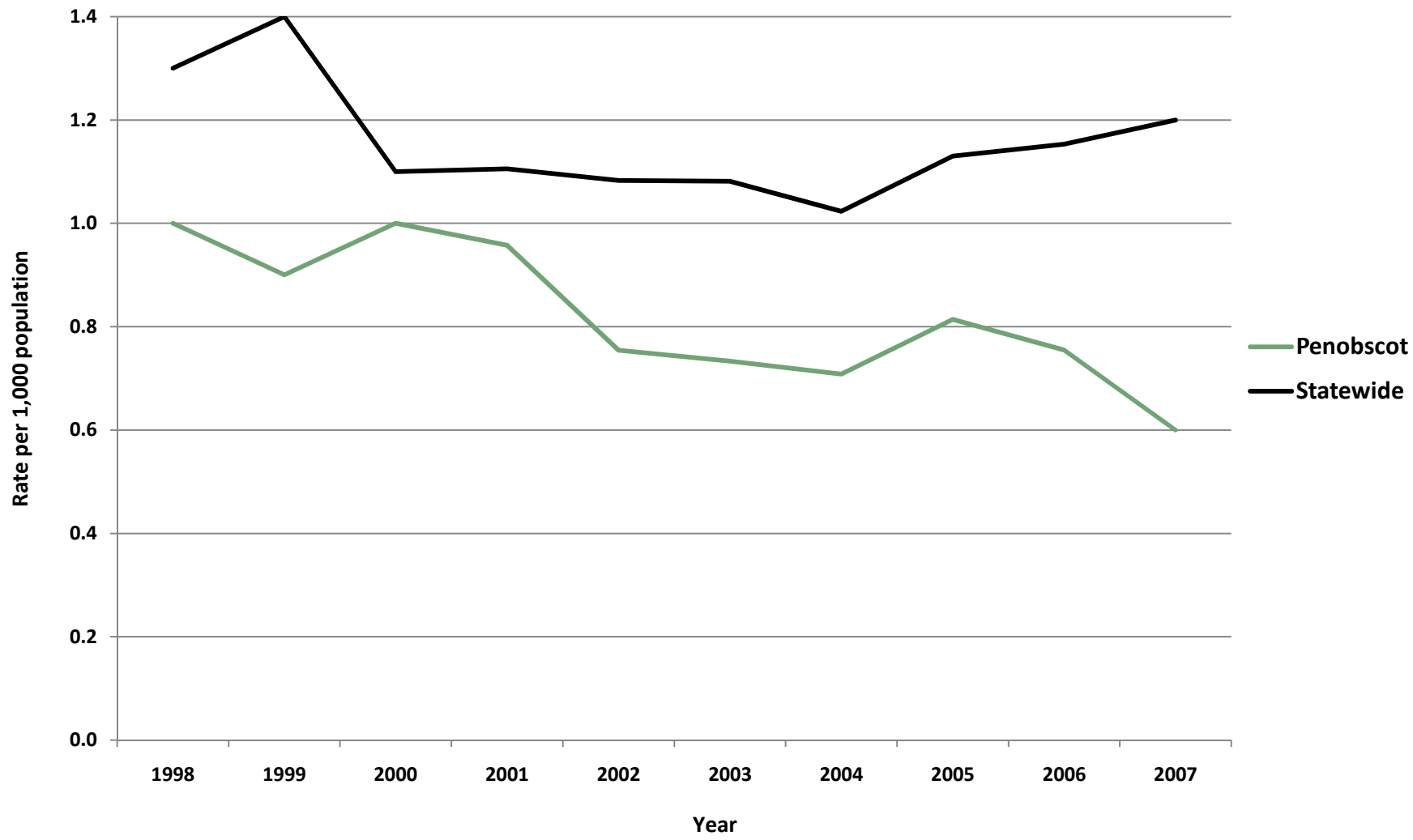


Violent Crimes per 1,000 Residents, County Comparisons, 2007

(Total Population)

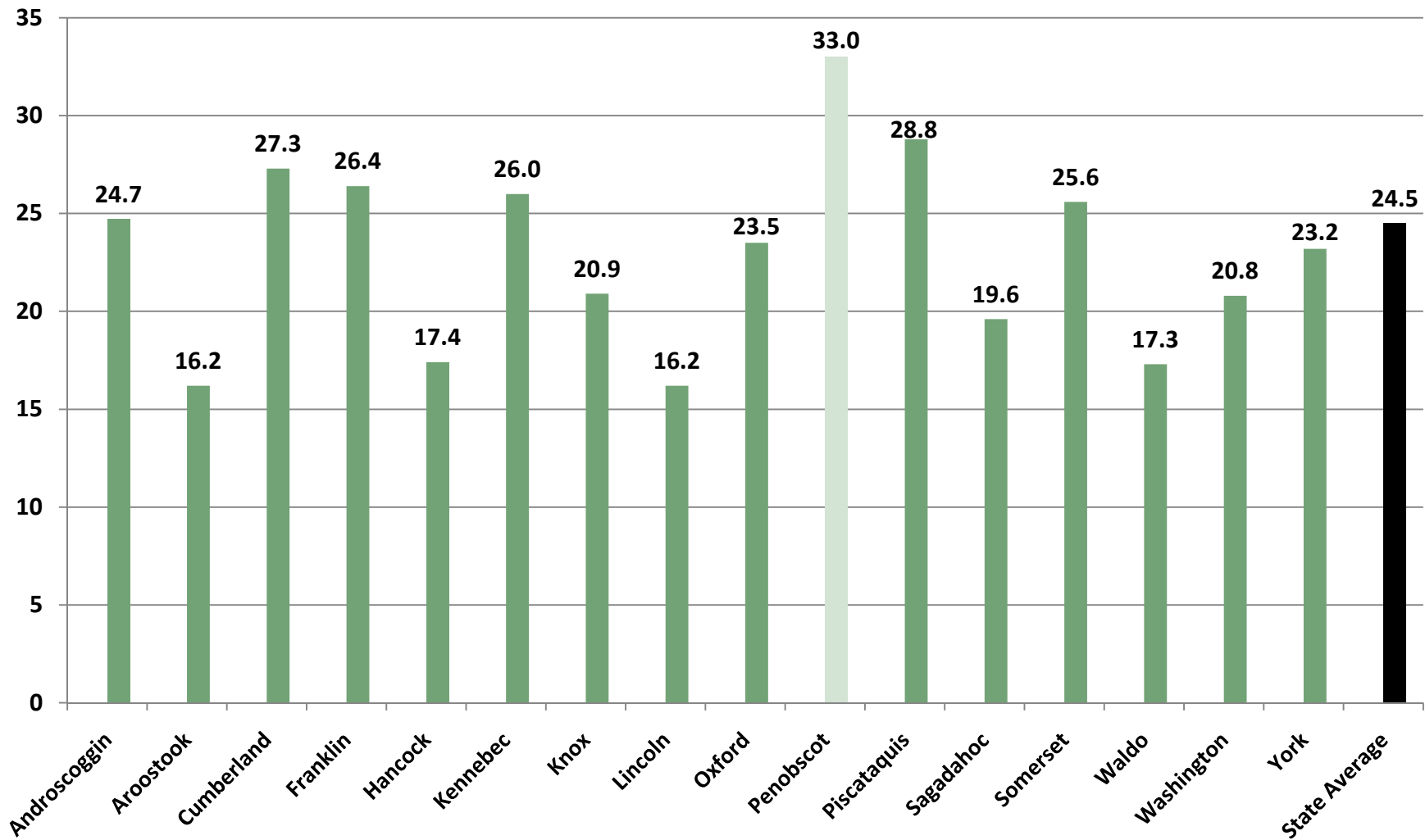


Penobscot - Violent Crimes per 1,000 Residents (Total Population)

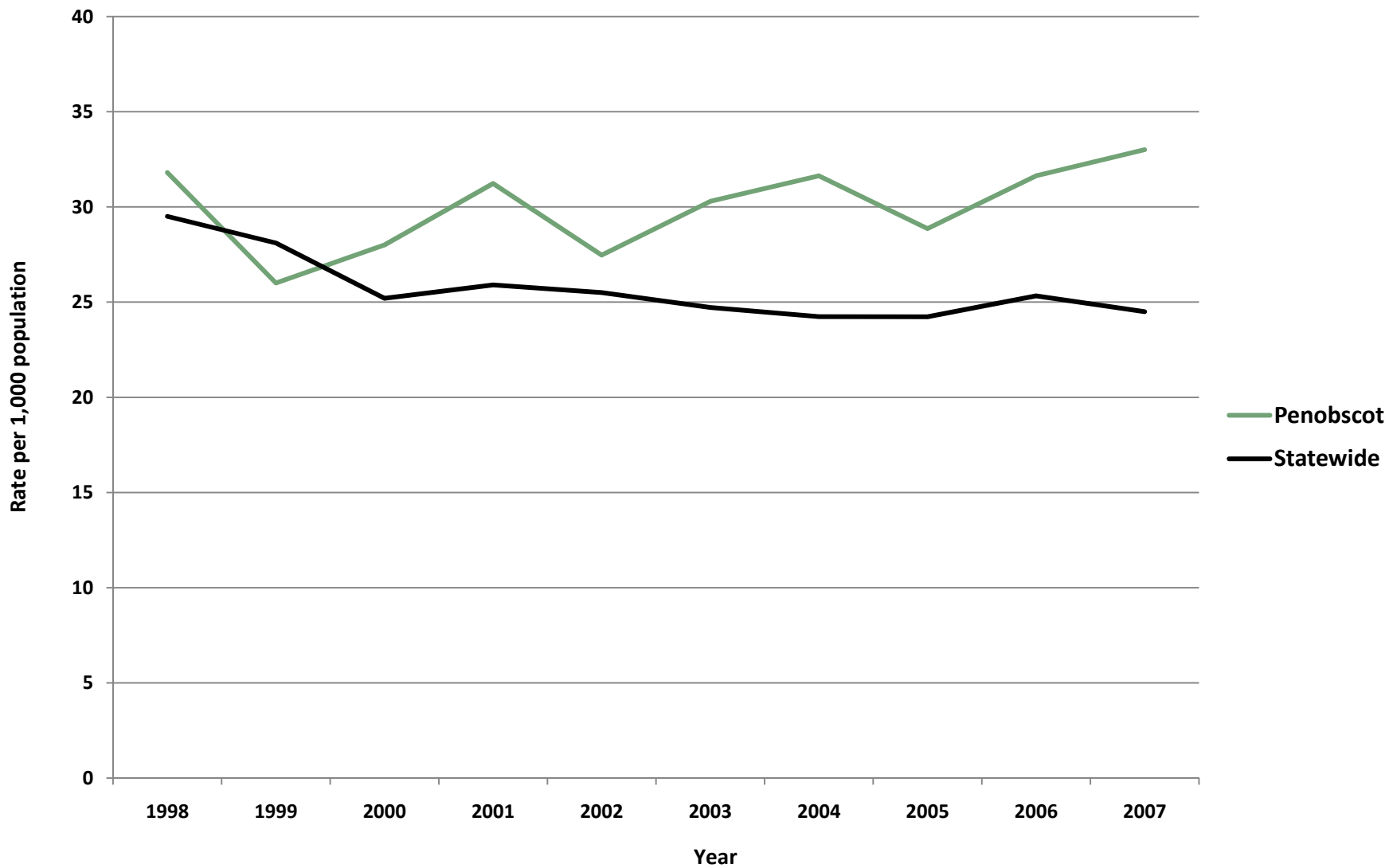


Property Crimes per 1,000 Residents, County Comparisons, 2007

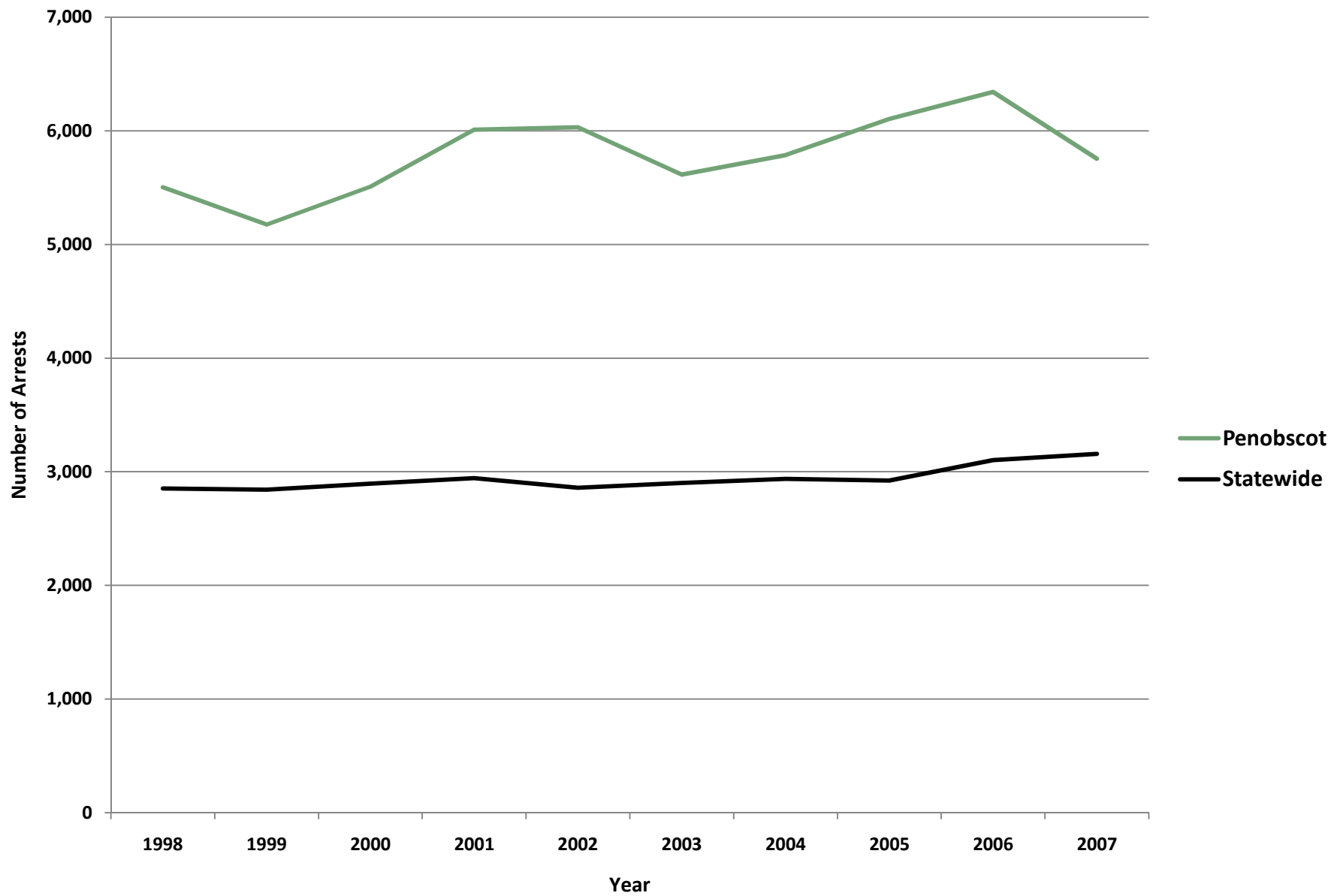
(Total Population)



Penobscot - Property Crimes per 1,000 Residents (Total Population)



Penobscot - Adult Arrests vs. Statewide Average



Penobscot - Adult Crime Statistics (2007)			
	Overall	Male	Female
Adult Arrests 2007	5,755	4,252	1,503
5-Year % Change	2.5%	-3.1%	34.8%
10-Year % Change	4.6%	-1.6%	16.2%
Crime Rates (2007)			
Index Crimes 2007 (per 1,000 pop.)	33.6	Crime Rates are calculated using both Adult & Juvenile Arrests	
5-Year % Change	8.3%		
10-Year % Change	2.1%		
Violent crimes 2007 (per 1,000 pop.)	0.6		
5-Year % Change	-18.2%		
10-Year % Change	-40.0%		
Property crimes 2007 (per 1,000 pop.)	33.0		
5-Year % Change	9.0%		
10-Year % Change	3.8%		
Adult Arrests by Type (2007)			
	Adult Overall	Adult Male	Adult Female
Murder & Non-negligent Manslaughter	3	3	0
Manslaughter by Negligence	0	0	0
Forcible Rape	5	4	1
Robbery	17	16	1
Aggravated Assault	21	13	8
Burglary, Breaking & Entering	118	104	14
Larceny-Theft (except Auto Theft)	845	486	359
Motor Vehicle Theft	18	17	1
Other Assaults	706	553	153
Arson	2	2	0
Forgery & Counterfeiting	69	44	25
Fraud	135	89	46
Embezzlement	2	2	0
Stolen Property: Buying, Receiving, Possessing	43	30	13
Vandalism	153	130	23
Weapons: Carrying, Possessing, etc.	14	14	0
Prostitution & Commercialized Vice	2	2	0
Sex Offenses	35	33	2
Drug Abuse Violations	673	507	166
Gambling	0	0	0
Offenses Against Family & Children	9	6	3
Driving Under the Influence	825	628	197
Liquor Laws	451	329	122
Drunkenness	0	0	0
Disorderly Conduct	185	140	45
All Other Offenses (Except Traffic)	1,424	1,100	324
Total	5,755	4,252	1,503

Penobscot- Juvenile Crime Statistics (2007)			
	Overall	Male	Female
Juvenile Arrests 2007	727	505	222
5-year % change Juvenile arrests	-12.1%	-6.7%	-22.4%
10-year % change Juvenile arrests	-45.8%	-47.9%	-40.5%
Juvenile Justice System Outcomes			
	Rate	Number	
Referrals	35.06 per 1,000 population	506	
Diversions	55.14 per 100 referrals	279	
Adjudications	82.84 per 100 petitions	251	
Juvenile Arrests by Type (2007)			
	Juvenile Overall	Juvenile Male	Juvenile Female
Murder & Non-negligent Manslaughter	0	0	0
Manslaughter by Negligence	0	0	0
Forcible Rape	0	0	0
Robbery	2	2	0
Aggravated Assault	1	0	1
Burglary, Breaking & Entering	30	29	1
Larceny-Theft (except Auto Theft)	221	118	103
Motor Vehicle Theft	4	4	0
Other Assaults	43	27	16
Arson	1	1	0
Forgery & Counterfeiting	1	1	0
Fraud	2	1	1
Embezzlement	0	0	0
Stolen Property: Buying, Receiving, Possessing	12	10	2
Vandalism	54	46	8
Weapons: Carrying, Possessing, etc.	4	4	0
Prostitution & Commercialized Vice	0	0	0
Sex Offenses	1	1	0
Drug Abuse Violations	76	68	8
Gambling	0	0	0
Offenses Against Family & Children	0	0	0
Driving Under the Influence	7	7	0
Liquor Laws	83	56	27
Drunkenness	0	0	0
Disorderly Conduct	16	12	4
All Other Offenses (Except Traffic)	134	101	33
Curfew & Loitering	2	2	0
Runaways	33	15	18
Total	727	505	222

Referral: Number of juveniles referred to the juvenile justice system.

Diversion: Number of juveniles formally diverted by a juvenile community corrections officer (JCCO).

Adjudication: Number of juveniles found guilty by a court of law.

ACKNOWLEDGEMENTS

Author

William Ethridge, Muskie School Public Policy & Management Graduate Student

Research Supervisor

Mark Rubin, Research Associate, Muskie School of Public Service

SAC Staff Contributor (Juvenile Statistics)

Becky Noreus, Research Analyst, Muskie School of Public Service

Editors

Carmen Dorsey, Director, Muskie School of Public Service Justice Policy Program

George Shaler, Research Associate, Muskie School of Public Service

Format and Design

Sheri Moulton, Project Assistant, Muskie School of Public Service

Special thanks to the Maine Statistical Analysis Center Advisory Group

Roxy Hennings, CQI Director, Division of Juvenile Services, Maine Department of Corrections

Denise Lord, Deputy Commissioner, Maine Department of Corrections

Janet Joyeux, Deputy Commissioner, Maine Department of Public Safety

Barry Stoodley, Associate Commissioner of Juvenile Services, Maine Department of Corrections

Paul Vestal, Chair, Maine Criminal Justice Commission

Sherry Wilkins, Court Management Analyst, Maine Administrative Office of the Courts

Attribution

The Maine County Profile Justice Data was created under the auspices of the State Justice Statistics Program, Bureau of Justice Statistics (BJS), Department of Justice (DOJ). Funding was provided by BJS Grant 2008-BJ-CX-K034. The opinions, findings, and conclusions expressed in this publication are those of the authors and do not necessarily reflect the view of the Department of Justice.

All data included in the criminal justice highlights and the corresponding charts and tables was derived from the [2008 Maine Crime and Justice Data Book](#) and the [Maine Department of Public Safety](#) and the [Maine Department of Corrections Juvenile Recidivism Report](#).

Updated: 12/09

ABOUT THE UNIVERSITY OF SOUTHERN MAINE (USM)
MUSKIE SCHOOL OF PUBLIC SERVICE

The USM Muskie School of Public Service educates leaders, informs public policy, and strengthens civic life through its graduate degree programs, research institutes and public outreach activities. By making the essential connection between research, practice, and informed public policy, the School is dedicated to improving the lives of people of all ages, in every county in Maine and every state in the nation.

*This report is available on the Justice Policy Program Website:
<http://muskie.usm.maine.edu/justiceresearch>*