



PISCATAQUIS COUNTY

Justice Data

USM Muskie School of Public Service
Maine Statistical Analysis Center



Piscataquis County Facts

- *Piscataquis County, incorporated in 1838, is one of Maine’s largest counties, encompassing 3,780 square miles of Maine and making it one of the largest counties east of the Mississippi River.*
- *The county is land-locked and geographically located in the center of Maine, bordered by Somerset County on the west and Penobscot County on the east. Piscataquis County is known for its forests and lakes, which attract summer and winter visitors.*
- *1% of Maine’s total population resides in Piscataquis County*
- *In 2007, the juvenile population of Piscataquis County was estimated at 3,362¹.*

Population by Gender and Age, 2007 ²			
Gender/Age Group	Number	Percent of Total	
		Piscataquis	Maine
Total	17,235	100.0%	100.0%
Male	8,458	49.0%	48.8%
Female	8,777	51.0%	51.2%
Under 14	3,169	18.3%	17.3%
15 to 24	1,839	10.7%	12.9%
25 to 34	1,758	10.2%	11.3%
35 to 44	2,730	15.8%	14.7%
45 to 54	2,790	16.2%	16.5%
55 to 64	1,954	11.3%	12.6%
65 to 74	1,546	9.0%	7.5%
75 to 84	1,042	6.0%	5.3%
85+	407	2.4%	1.9%
Median Age	-	42	41

¹OJDDP Statistical Briefing Book

²Maine Department of Labor, 2007

Demographic Facts³

- Population has declined in Piscataquis County (1.6% decrease from 2000 to 2008) compared with a statewide growth rate of 3.3% over the same time period.
- The population is, on average, older than the statewide population.
 - Persons under 18 account for 19.6% of Piscataquis County's population compared with the statewide average of 21.8%.
- Educational attainment is lower than the statewide average.
 - 80.3% of those ages 25+ in Piscataquis County have graduated from high school compared with the statewide average of 85.4%.
 - 13.3% of those ages 25+ in Piscataquis County have obtained a bachelor's degree or higher compared with the statewide average of 22.9%.
- Most income measures are lower than average and poverty is higher.
 - The median household income in Piscataquis County is \$32,989 compared with a statewide average of \$45,832.
 - 16.5% of Piscataquis County residents live below the poverty line compared with a statewide average of 12.2%.
- Population density: 4 people per square mile
- Largest Cities: Dover-Foxcroft (4,269), Milo (2,354)

³ Ibid.

Adult Criminal Justice Highlights

PISCATAQUIS COUNTY HAS SEEN A DECREASE IN ADULT ARRESTS BUT AN INCREASE IN OVERALL INDEX CRIMES OVER THE PAST 10 YEARS.

- The adult arrest rate decreased by 38% over the last 5 years and decreased by 33.3% over the last 10 years.
- In 2007, Piscataquis County had the second highest index crime rate at 32.2 per 1,000 residents. The statewide average is 25.7 per 1,000 residents.
- Index crimes increased by 19.7% over the last 5 years and increased by 22.9% over the last 10 years.

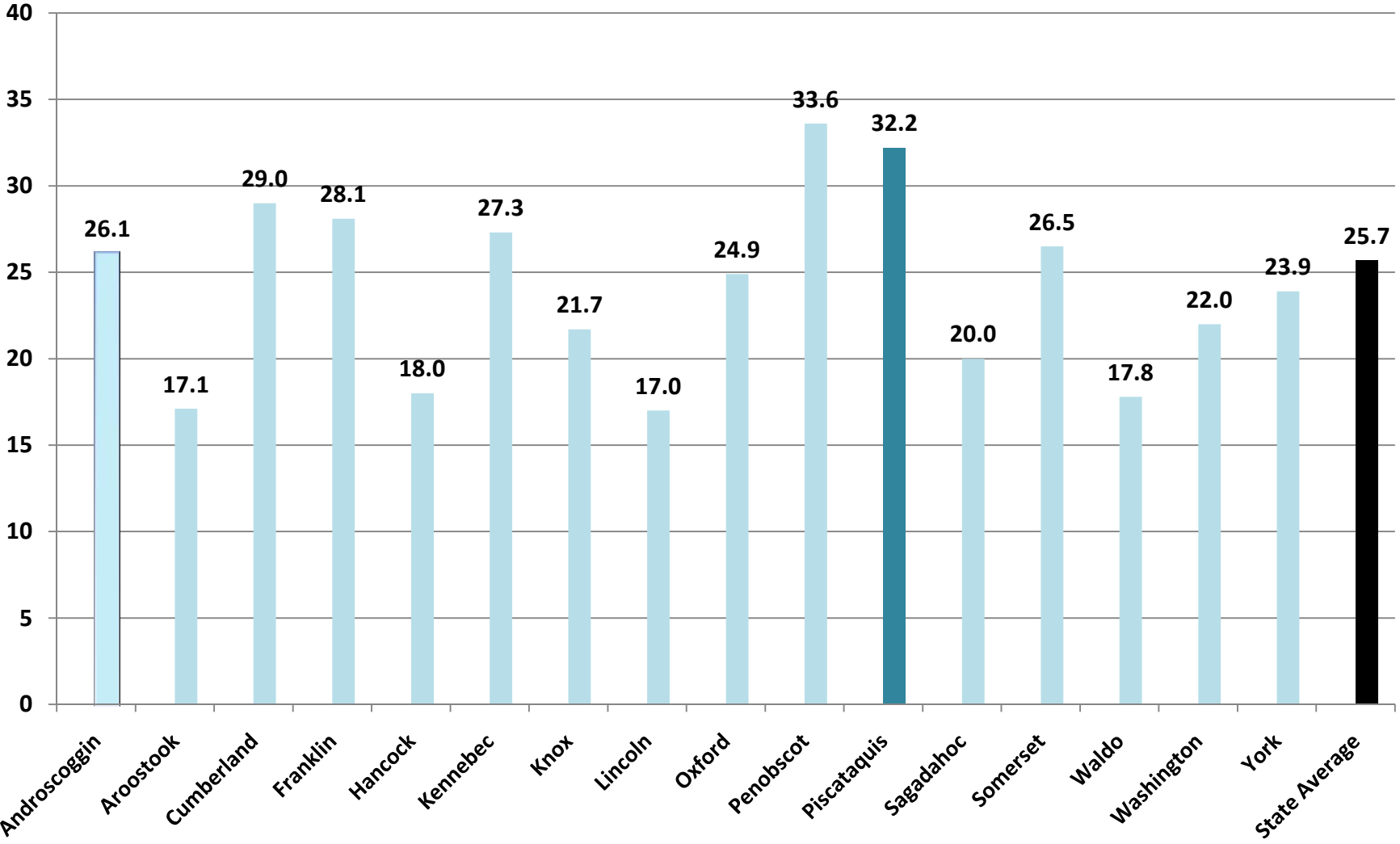
Juvenile Justice Highlights

JUVENILE ARRESTS HAVE DECLINED OVER THE PAST 10 YEARS. HOWEVER, IN 2005, PISCATAQUIS COUNTY REPORTED HIGHER RATES OF JUVENILE FIRST TIME ADJUDICATIONS AND JUVENILE RECIDIVISM THAN THE STATEWIDE AVERAGE.

- The juvenile arrest rate has declined by 22.6% over the last 5 years and decreased by 37.8% over the last 10 years.
- In 2005, the rate of juveniles adjudicated for the first time was 9.0 per 1,000 residents. This was slightly higher than the statewide average of 8.4 per 1,000 residents.
- In 2005, the juvenile recidivism rate was 29%. This was slightly higher than the statewide average of 27% in 2005.

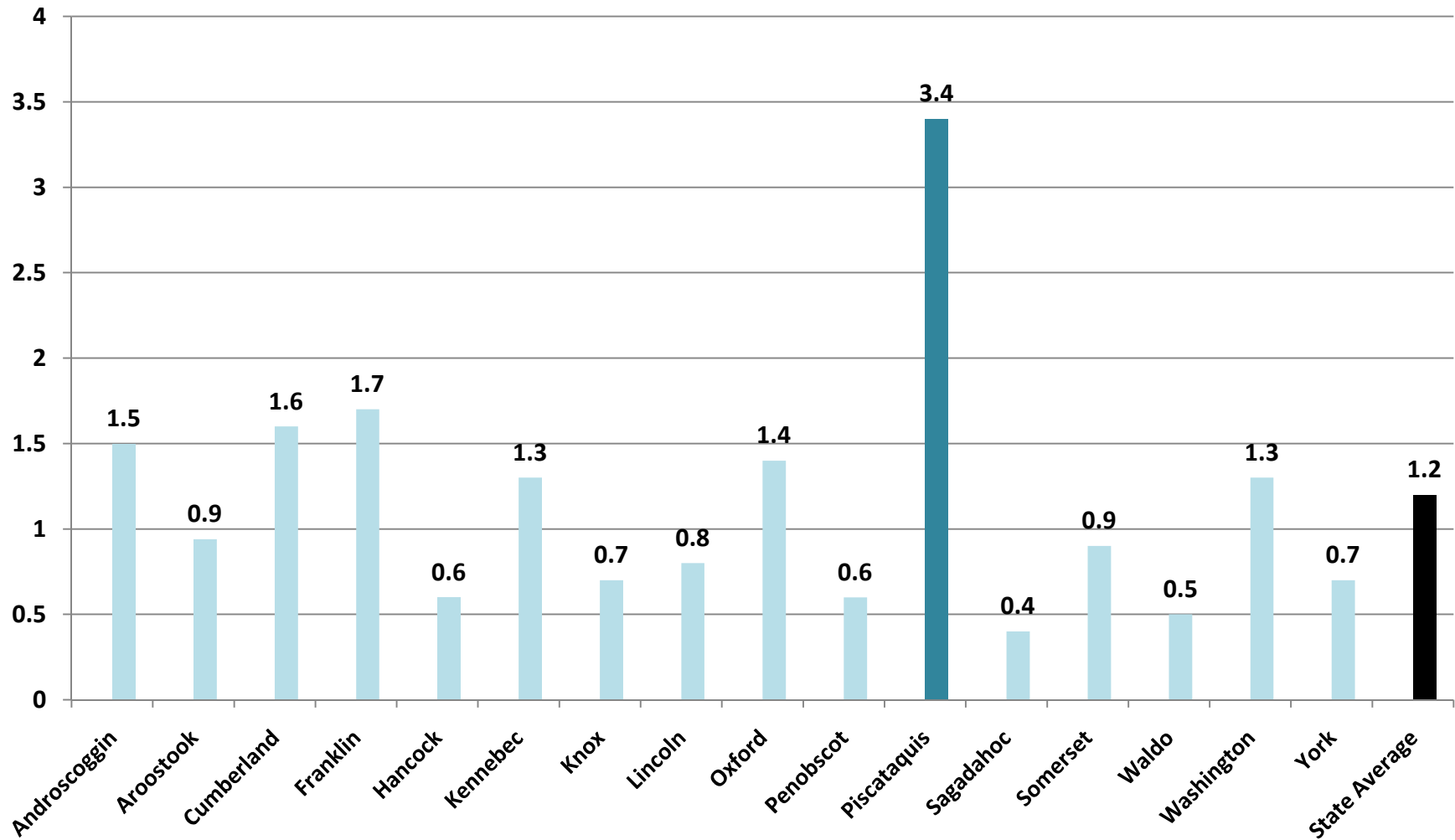
Index Crimes per 1,000 Residents, County Comparisons, 2007

(Total Population)

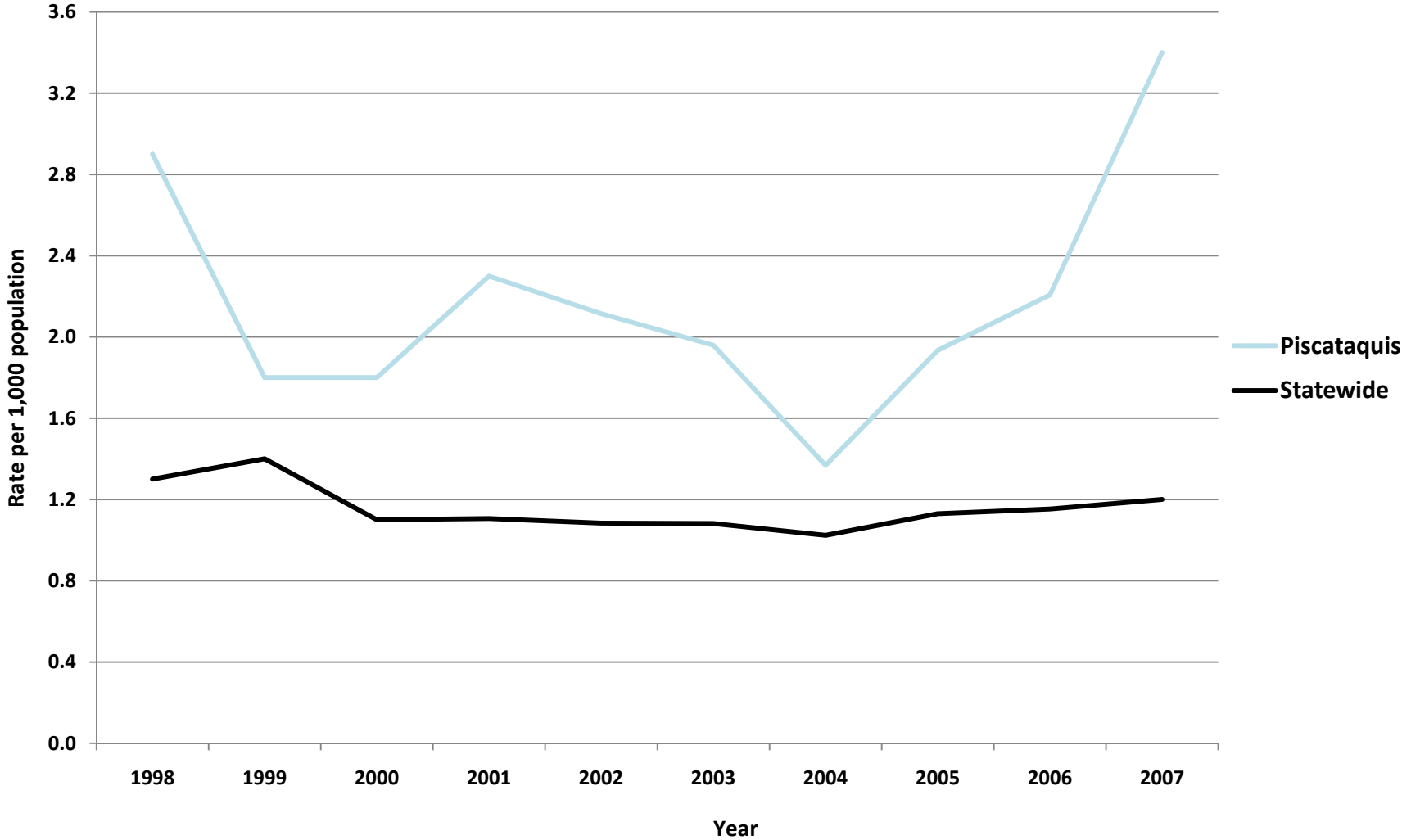


Violent Crimes per 1,000 Residents, County Comparisons, 2007

(Total Population)

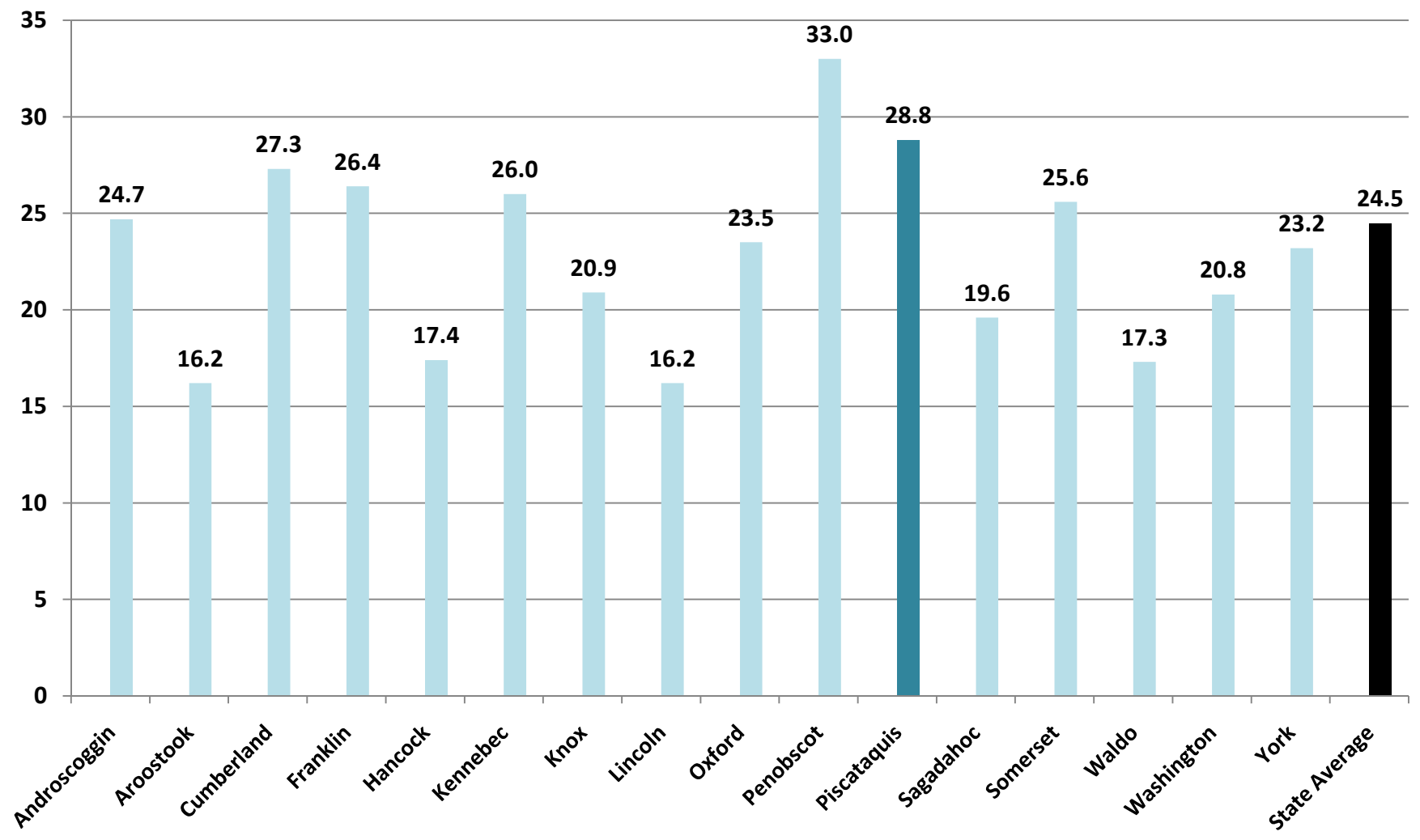


Piscataquis - Violent Crimes per 1,000 Residents (Total Population)

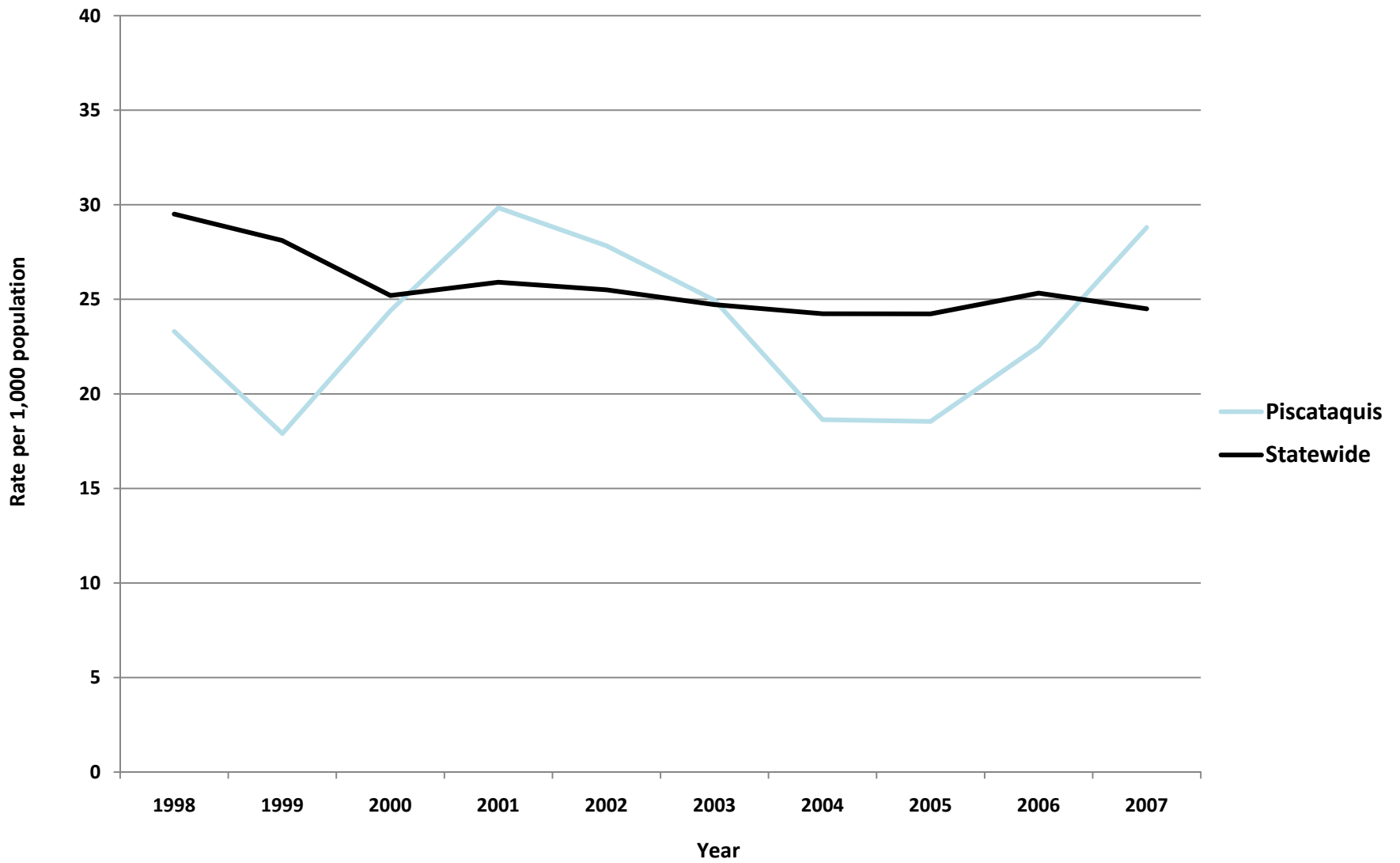


Property Crimes per 1,000 Residents, County Comparisons, 2007

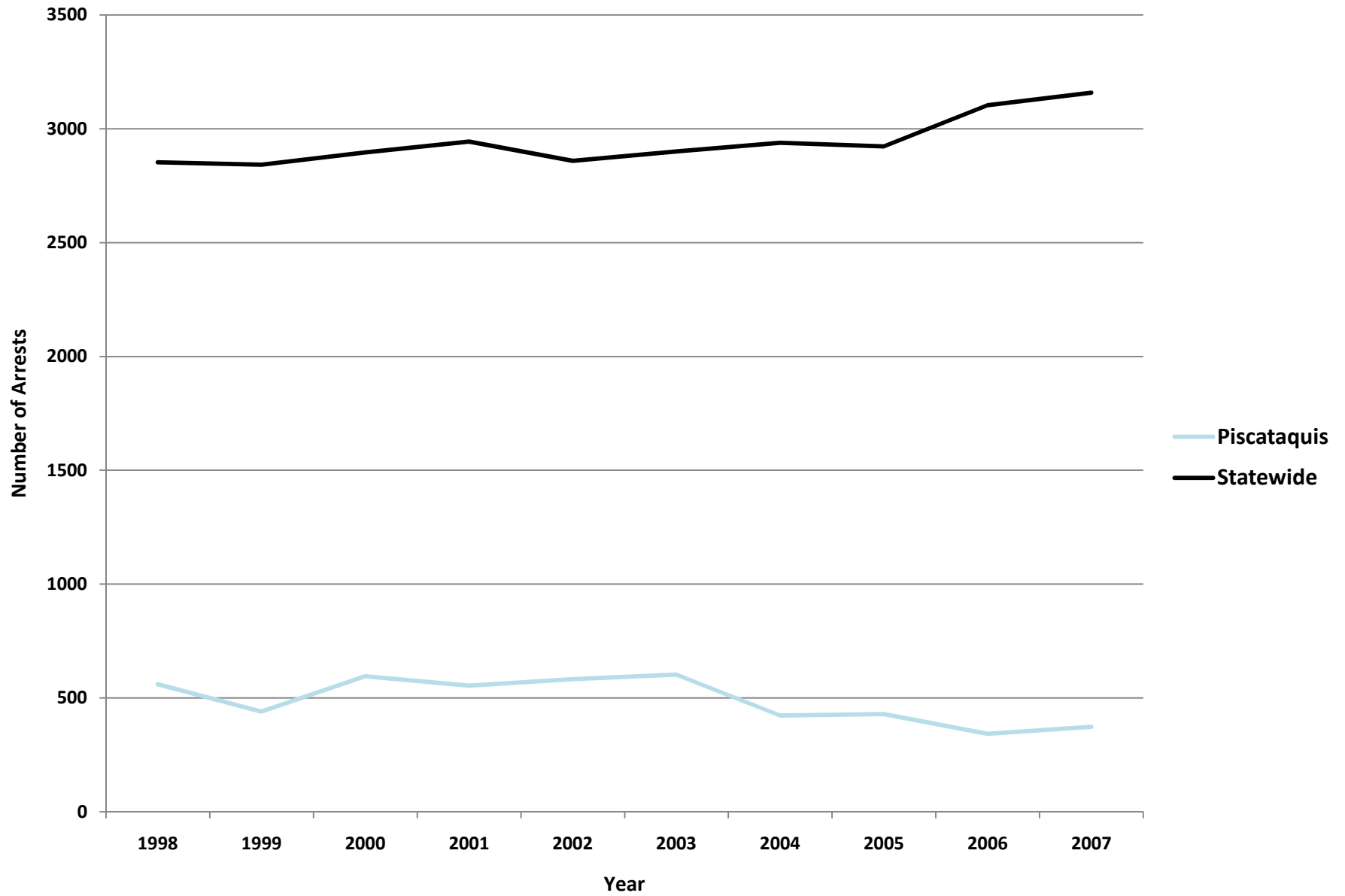
(Total Population)



Piscataquis - Property Crimes per 1,000 Residents (Total Population)



Piscataquis - Adult Arrests vs. Statewide Average



Piscataquis - Adult Crime Statistics (2007)			
	Overall	Male	Female
Adult Arrests 2007	374	262	112
5-Year % Change	-38.0%	-44.1%	-16.4%
10-Year % Change	-33.3%	-38.9%	-15.2%
Crime Rates (2007)			
Index Crimes 2007 (per 1,000 pop.)	32.2	Crime Rates are calculated using both Adult & Juvenile Arrests	
5-Year % Change	19.7%		
10-Year % Change	22.9%		
Violent crimes 2007 (per 1,000 pop.)	3.4		
5-Year % Change	73.5%		
10-Year % Change	17.2%		
Property crimes 2007 (per 1,000 pop.)	28.8		
5-Year % Change	15.4%		
10-Year % Change	23.6%		
Adult Arrests by Type (2007)			
	Adult Overall	Adult Male	Adult Female
Murder & Non-negligent Manslaughter	0	0	0
Manslaughter by Negligence	0	0	0
Forcible Rape	2	2	0
Robbery	2	2	0
Aggravated Assault	17	8	9
Burglary, Breaking & Entering	9	8	1
Larceny-Theft (except Auto Theft)	32	19	13
Motor Vehicle Theft	1	0	1
Other Assaults	34	25	9
Arson	1	1	0
Forgery & Counterfeiting	4	1	3
Fraud	34	14	20
Embezzlement	0	0	0
Stolen Property: Buying, Receiving, Possessing	5	5	0
Vandalism	13	11	2
Weapons: Carrying, Possessing, etc.	2	2	0
Prostitution & Commercialized Vice	0	0	0
Sex Offenses	4	4	0
Drug Abuse Violations	61	49	12
Gambling	0	0	0
Offenses Against Family & Children	4	3	1
Driving Under the Influence	60	47	13
Liquor Laws	29	15	14
Drunkenness	4	4	0
Disorderly Conduct	11	9	2
All Other Offenses (Except Traffic)	45	33	12
Total	374	262	112

Piscataquis- Juvenile Crime Statistics (2007)			
	Overall	Male	Female
Juvenile Arrests 2007	89	84	5
5-year % change Juvenile arrests	-22.6%	-5.6%	-80.8%
10-year % change Juvenile arrests	-37.8%	-30.6%	-77.3%
Juvenile Justice System Outcomes			
	Rate	Number	
Referrals	34.83 per 1,000 population	59	
Diversions	64.41 per 100 referrals	38	
Adjudications	24.29 per 100 petitions	17	
Juvenile Arrests by Type (2007)			
	Juvenile Overall	Juvenile Male	Juvenile Female
Murder & Non-negligent Manslaughter	0	0	0
Manslaughter by Negligence	0	0	0
Forcible Rape	0	0	0
Robbery	0	0	0
Aggravated Assault	4	4	0
Burglary, Breaking & Entering	12	11	1
Larceny-Theft (except Auto Theft)	15	15	0
Motor Vehicle Theft	4	4	0
Other Assaults	9	9	0
Arson	0	0	0
Forgery & Counterfeiting	1	0	1
Fraud	0	0	0
Embezzlement	0	0	0
Stolen Property: Buying, Receiving, Possessing	0	0	0
Vandalism	4	4	0
Weapons: Carrying, Possessing, etc.	0	0	0
Prostitution & Commercialized Vice	0	0	0
Sex Offenses	2	2	0
Drug Abuse Violations	16	15	1
Gambling	0	0	0
Offenses Against Family & Children	1	0	1
Driving Under the Influence	1	1	0
Liquor Laws	14	13	1
Drunkenness	0	0	0
Disorderly Conduct	0	0	0
All Other Offenses (Except Traffic)	4	4	0
Curfew & Loitering	1	1	0
Runaways	1	1	0
Total	89	84	5

Referral: Number of juveniles referred to the juvenile justice system.

Diversion: Number of juveniles formally diverted by a juvenile community corrections officer (JCCO).

Adjudication: Number of juveniles found guilty by a court of law.

ACKNOWLEDGEMENTS

Author

William Ethridge, Muskie School Public Policy & Management Graduate Student

Research Supervisor

Mark Rubin, Research Associate, Muskie School of Public Service

SAC Staff Contributor (Juvenile Statistics)

Becky Noreus, Research Analyst, Muskie School of Public Service

Editors

Carmen Dorsey, Director, Muskie School of Public Service Justice Policy Program

George Shaler, Research Associate, Muskie School of Public Service

Format and Design

Sheri Moulton, Project Assistant, Muskie School of Public Service

Special thanks to the Maine Statistical Analysis Center Advisory Group

Roxy Hennings, CQI Director, Division of Juvenile Services, Maine Department of Corrections

Denise Lord, Deputy Commissioner, Maine Department of Corrections

Janet Joyeux, Deputy Commissioner, Maine Department of Public Safety

Barry Stoodley, Associate Commissioner of Juvenile Services, Maine Department of Corrections

Paul Vestal, Chair, Maine Criminal Justice Commission

Sherry Wilkins, Court Management Analyst, Maine Administrative Office of the Courts

Attribution

The Maine County Profile Justice Data was created under the auspices of the State Justice Statistics Program, Bureau of Justice Statistics (BJS), Department of Justice (DOJ). Funding was provided by BJS Grant 2008-BJ-CX-K034. The opinions, findings, and conclusions expressed in this publication are those of the authors and do not necessarily reflect the view of the Department of Justice.

All data included in the criminal justice highlights and the corresponding charts and tables was derived from the [2008 Maine Crime and Justice Data Book](#) and the [Maine Department of Public Safety](#) and the [Maine Department of Corrections Juvenile Recidivism Report](#).

Updated: 12/09

ABOUT THE UNIVERSITY OF SOUTHERN MAINE (USM)
MUSKIE SCHOOL OF PUBLIC SERVICE

The USM Muskie School of Public Service educates leaders, informs public policy, and strengthens civic life through its graduate degree programs, research institutes and public outreach activities. By making the essential connection between research, practice, and informed public policy, the School is dedicated to improving the lives of people of all ages, in every county in Maine and every state in the nation.

This report is available on the Justice Policy Program Website:
<http://muskie.usm.maine.edu/justiceresearch>