



# YORK COUNTY

Justice Profile

**USM Muskie School of Public Service**  
Maine Statistical Analysis Center



## York County Facts

- *York County, incorporated in 1636, is the southernmost county in Maine. Its county seat is Alfred. York was the first county incorporated in the State of Maine.*
- *York County is a popular destination for Mainers and visitors alike, offering beautiful beaches like Ogunquit. Wells, a town in York, offers the Wells National Research Reserve- a 1,600 acre educational and research facility.*
- *15% of Maine's total population resides in York County.*
- *In 2007, the juvenile population in York County was estimated at 44,376<sup>1</sup>.*

Population by Gender and Age, 2007 <sup>2</sup>			
Gender/Age Group	Number	Percent of Total	
		York	Maine
<b>Total</b>	<b>201,075</b>	<b>100.0%</b>	<b>100.0%</b>
Male	98,223	48.8%	48.8%
Female	102,852	51.2%	51.2%
Under 14	36,193	18.0%	17.3%
15 to 24	24,460	12.2%	12.9%
25 to 34	22,347	11.1%	11.3%
35 to 44	30,476	15.2%	14.7%
45 to 54	34,311	17.1%	16.5%
55 to 64	25,164	12.5%	12.6%
65 to 74	14,471	7.2%	7.5%
75 to 84	10,100	5.0%	5.3%
85+	3,553	1.8%	1.9%
<b>Median Age</b>	-	<b>41</b>	<b>41</b>

<sup>1</sup> OJJDP Statistical Briefing Book

<sup>2</sup> Maine Department of Labor, 2007

## Demographic Facts<sup>3</sup>

- Population growth in York County (8.0% increase from 2000 to 2008) has been faster than the statewide average (3.3% increase from 2000 to 2008).
- The population is younger than the statewide average.
  - Persons under 18 account for 22.0% of York County's population compared with the statewide average of 21.2%.
- Educational attainment is similar to the statewide average.
  - 86.5% of those ages 25+ in York County have graduated from high school compared with the statewide average of 85.4%.
  - 22.9% of those ages 25+ in York County have obtained a bachelor's degree or higher compared with the statewide average of 22.9%.
- Most income measures are higher and poverty rates are lower than statewide averages.
  - The median household income in York County is \$52,365 compared with a statewide average of \$45,832.
  - 8.2% of Kennebec County residents live below the poverty line compared with a statewide average of 12.2%.
- Population density: 135 people per square mile
- Largest cities (population): Biddeford (21,594), Sanford (21,252), Saco (18,164)

---

<sup>3</sup> Ibid.

## Adult Criminal Justice Highlights

*YORK COUNTY HAS SEEN A SLIGHT INCREASE IN ADULT ARRESTS AND THE INDEX CRIME RATE OVER THE LAST 5 YEARS.*

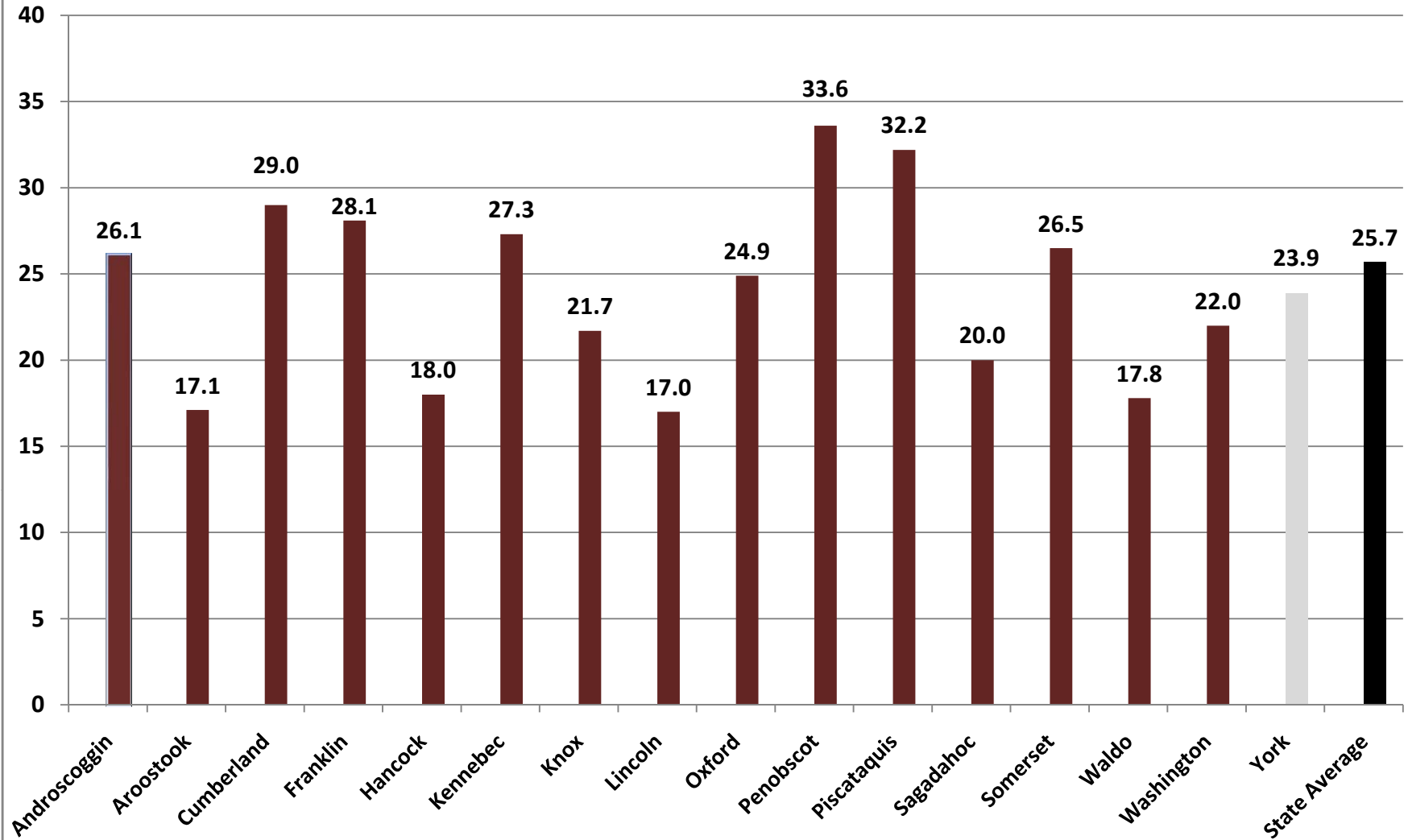
- The adult arrest rate has remained relatively steady, increasing by 6.1% over the last 5 years and increasing by 5.8% over the last 10 years.
- In 2007, York County had an index crime rate of 23.9 per 1,000 residents. The statewide average is 25.7 per 1,000 residents.
- Index crimes increased by 9.3% over the last 5 years, but registered a net decline of 23.2% over a 10 year period.

## Juvenile Justice Highlights

*JUVENILE ARRESTS HAVE SHOWN A DECLINE OVER THE PAST 10 YEARS. IN 2005, YORK COUNTY'S RATES OF JUVENILE FIRST TIME ADJUDICATIONS AND JUVENILE RECIDIVISM WERE SIMILAR TO THE STATEWIDE AVERAGES.*

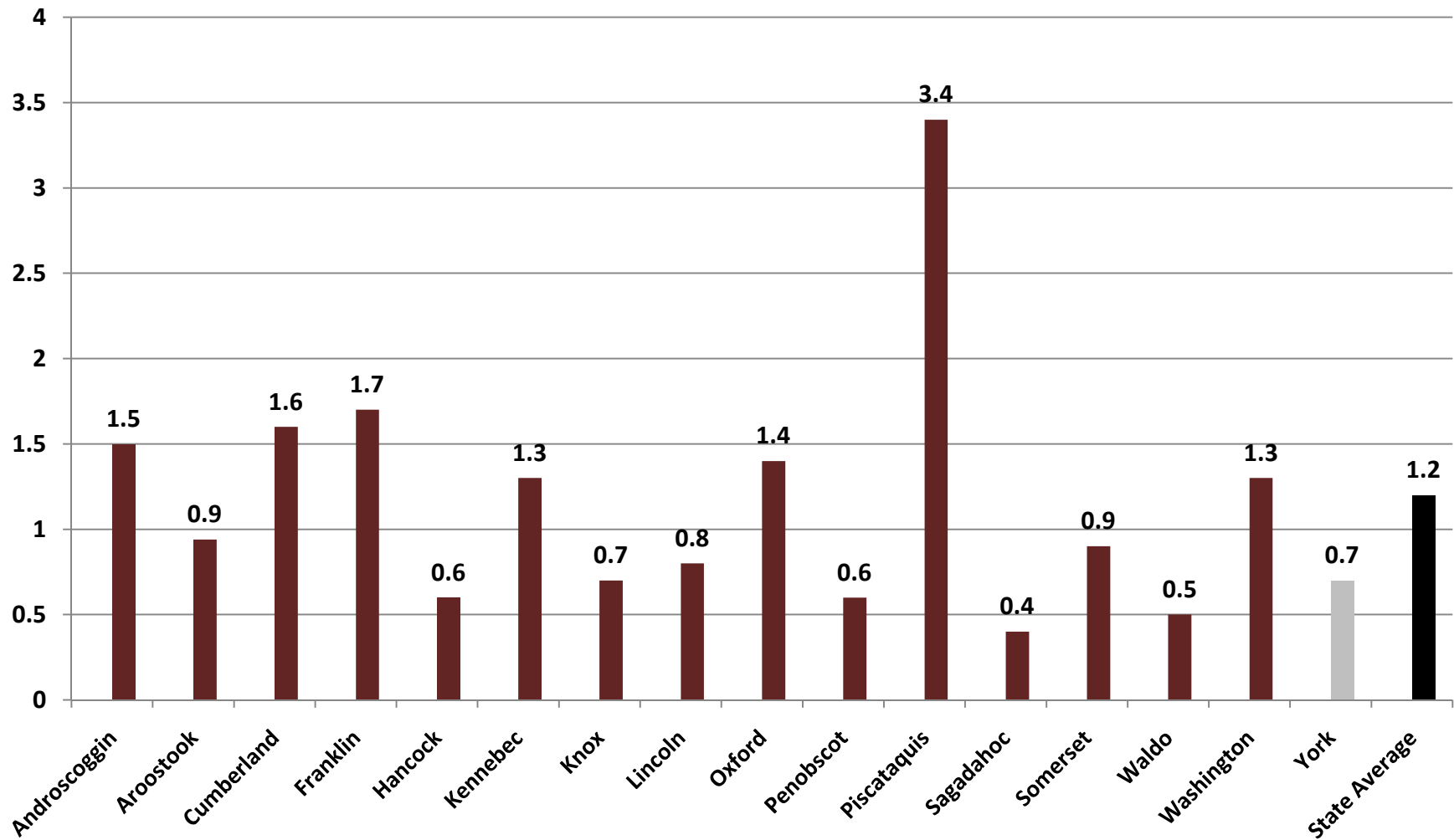
- The juvenile arrest rate has declined by 22.9% over the last 5 years and decreased by 26.7% over the last 10 years.
- In 2005, the rate of juveniles adjudicated for the first time was 7.6 per 1,000 residents. This was comparable to the statewide average of 8.4 per 1,000 residents in 2005.
- In 2005, the juvenile recidivism rate was 26%. This was comparable to the statewide average of 27% in 2005.

## Index Crimes per 1,000 Residents, County Comparisons, 2007 (Total Population)

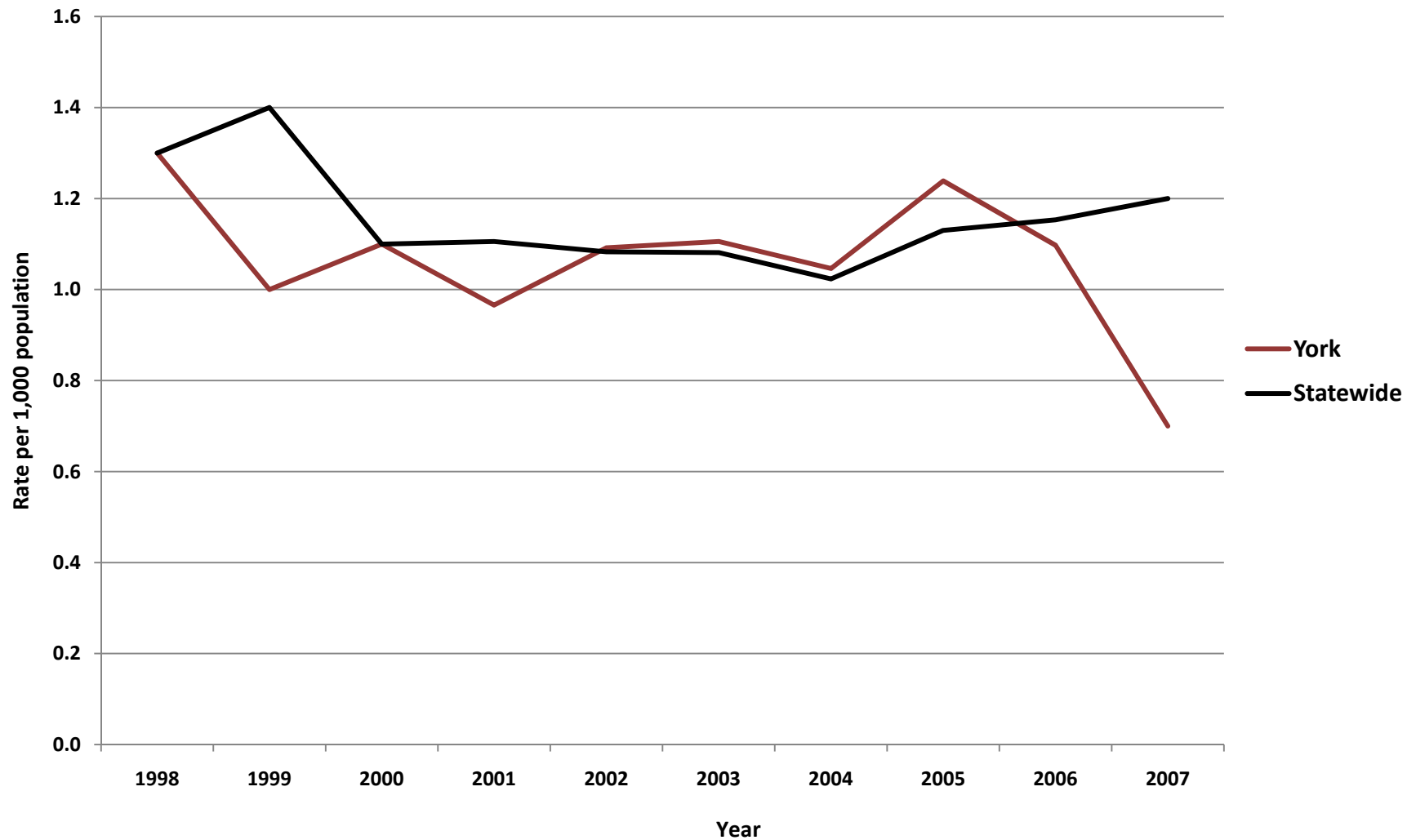


## Violent Crimes per 1,000 Residents, County Comparisons, 2007

(Total Population)

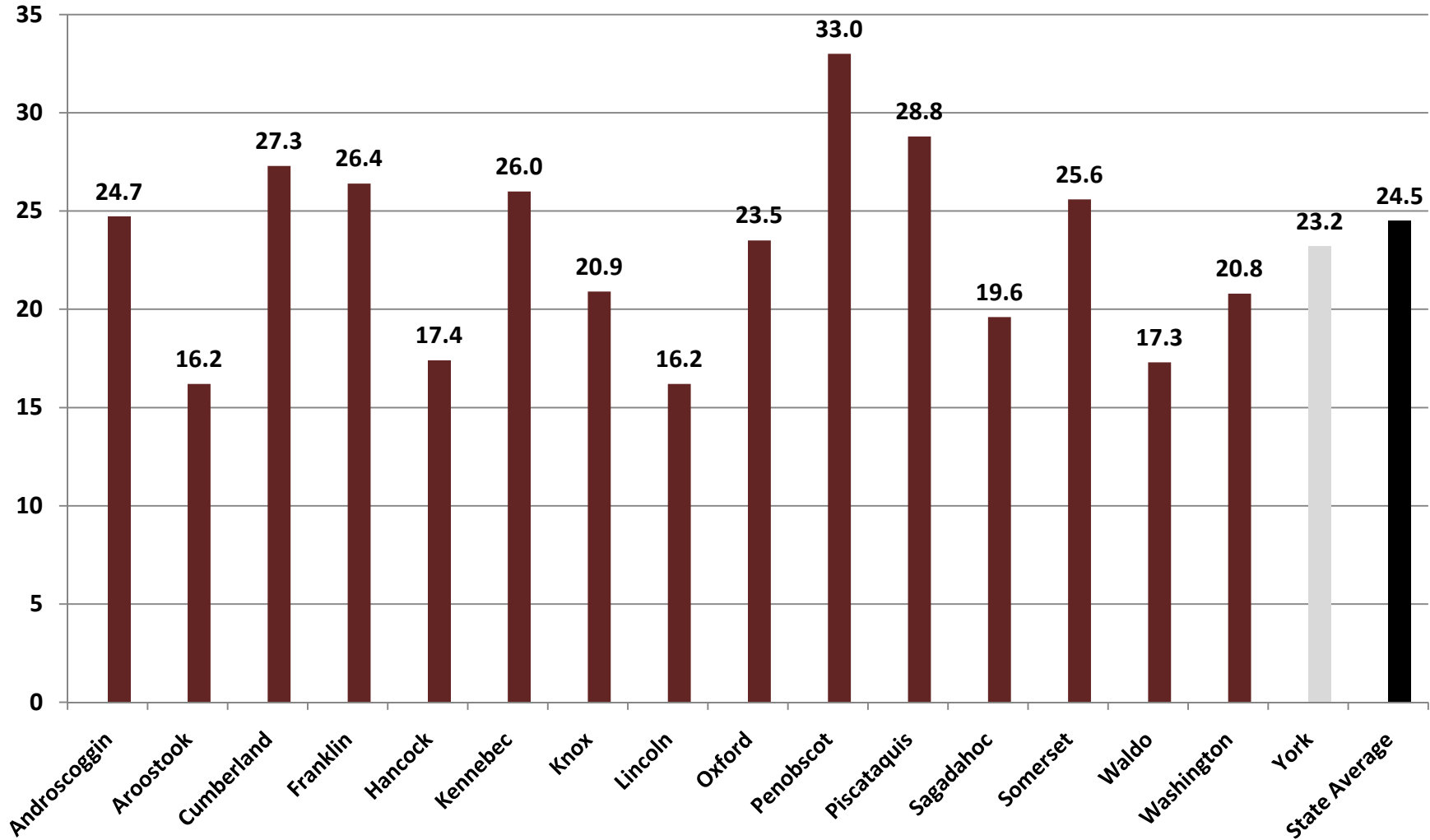


## York - Violent Crimes per 1,000 Residents (Total Population)



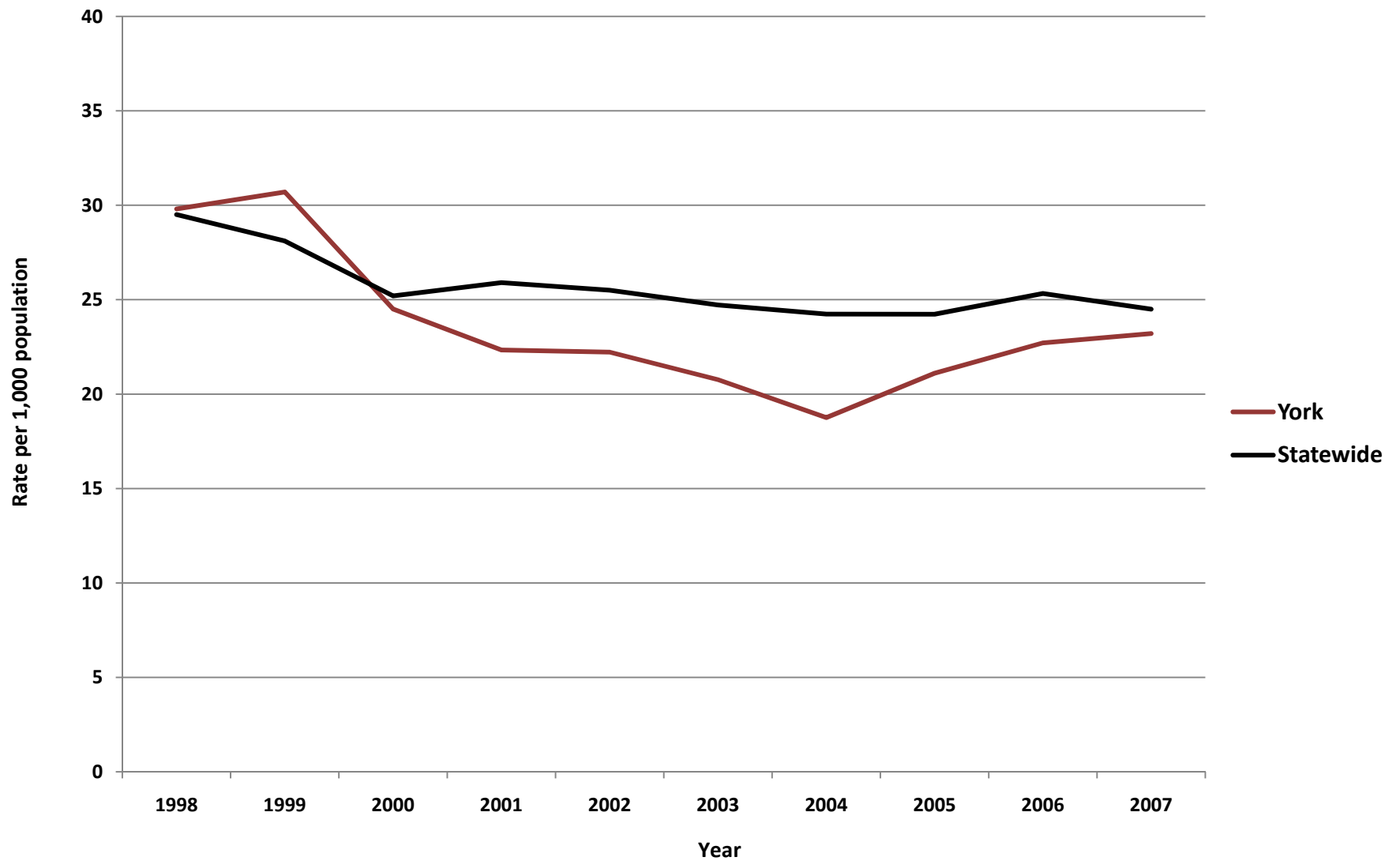
# Property Crimes per 1,000 Residents, County Comparisons, 2007

(Total Population)

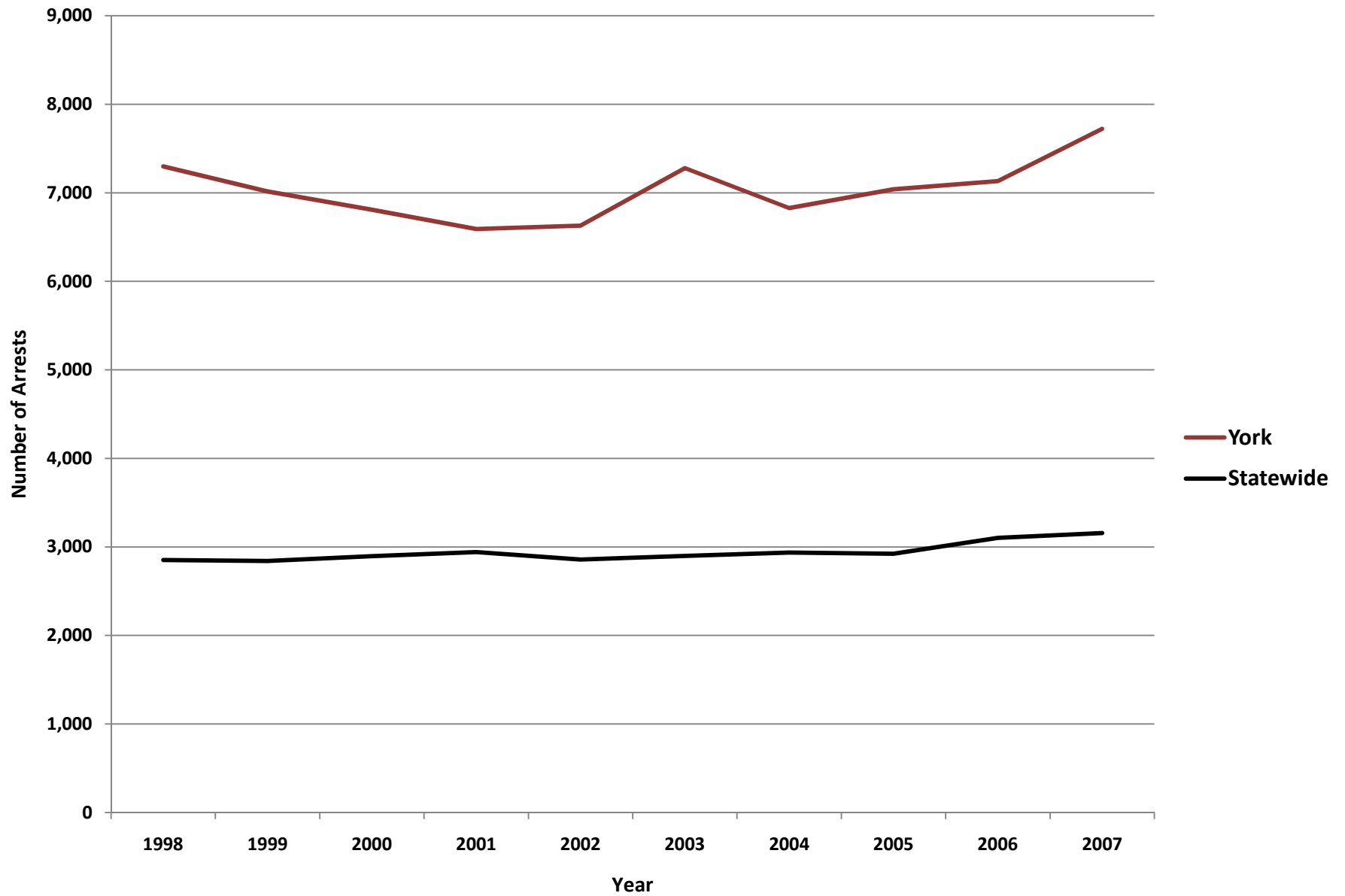




## York - Property Crimes per 1,000 Residents (Total Population)



### York - Adult Arrests vs. Statewide Average



<b>York - Adult Crime Statistics (2007)</b>			
	<b>Overall</b>	<b>Male</b>	<b>Female</b>
<b>Adult Arrests 2007</b>	7,720	5,708	2,012
5-Year % Change	6.1%	2.3%	18.5%
10-Year % Change	5.8%	-0.9%	30.8%
<b>Crime Rates (2007)</b>			
<b>Index Crimes 2007 (per 1,000 pop.)</b>	23.9	<b>Crime Rates are calculated using both Adult &amp; Juvenile Arrests</b>	
5-Year % Change	9.3%		
10-Year % Change	-23.2%		
<b>Violent crimes 2007 (per 1,000 pop.)</b>	0.7		
5-Year % Change	-36.7%		
10-Year % Change	-46.2%		
<b>Property crimes 2007 (per 1,000 pop.)</b>	23.2		
5-Year % Change	11.8%		
10-Year % Change	-22.1%		
<b>Adult Arrests by Type (2007)</b>			
	<b>Adult - Overall</b>	<b>Adult - Male</b>	<b>Adult - Female</b>
<a href="#">Murder &amp; Non-negligent Manslaughter</a>	3	3	0
<a href="#">Manslaughter by Negligence</a>	0	0	0
<a href="#">Forcible Rape</a>	8	8	0
<a href="#">Robbery</a>	22	18	4
<a href="#">Aggravated Assault</a>	76	65	11
<a href="#">Burglary, Breaking &amp; Entering</a>	102	83	19
<a href="#">Larceny-Theft (except Auto Theft)</a>	512	294	218
<a href="#">Motor Vehicle Theft</a>	29	23	6
<a href="#">Other Assaults</a>	1,086	797	289
<a href="#">Arson</a>	10	7	3
<a href="#">Forgery &amp; Counterfeiting</a>	46	29	17
<a href="#">Fraud</a>	103	54	49
<a href="#">Embezzlement</a>	1	0	1
<a href="#">Stolen Property: Buying, Receiving, Possessing</a>	20	16	4
<a href="#">Vandalism</a>	167	134	33
<a href="#">Weapons: Carrying, Possessing, etc.</a>	70	67	3
<a href="#">Prostitution &amp; Commercialized Vice</a>	1	1	0
<a href="#">Sex Offenses</a>	15	14	1
<a href="#">Drug Abuse Violations</a>	838	653	185
<a href="#">Gambling</a>	1	1	0
<a href="#">Offenses Against Family &amp; Children</a>	9	5	4
<a href="#">Driving Under the Influence</a>	1,454	1,060	394
<a href="#">Liquor Laws</a>	635	454	181
<a href="#">Drunkenness</a>	1	1	0
<a href="#">Disorderly Conduct</a>	249	188	61
<a href="#">All Other Offenses (Except Traffic)</a>	2,262	1,733	529
<b>Total</b>	<b>7,720</b>	<b>5,708</b>	<b>2,012</b>

York- Juvenile Crime Statistics (2007)			
	Overall	Male	Female
<b>Juvenile Arrests 2007</b>	1,417	1,054	363
5-year % change Juvenile arrests	-22.9%	-24.9%	-16.4%
10-year % change Juvenile arrests	-26.7%	-23.3%	-34.8%
Juvenile Justice System Outcomes			
	Rate	Number	
<a href="#">Referrals</a>	45.14 per 1,000 population	996	
<a href="#">Diversions</a>	46.39 per 100 referrals	462	
<a href="#">Adjudications</a>	41.24 per 100 petitions	233	
Juvenile Arrests by Type (2007)			
	Juvenile Overall	Juvenile Male	Juvenile Female
<a href="#">Murder &amp; Non-negligent Manslaughter</a>	0	0	0
<a href="#">Manslaughter by Negligence</a>	0	0	0
<a href="#">Forcible Rape</a>	1	1	0
<a href="#">Robbery</a>	0	0	0
<a href="#">Aggravated Assault</a>	8	6	2
<a href="#">Burglary, Breaking &amp; Entering</a>	70	64	6
<a href="#">Larceny-Theft (except Auto Theft)</a>	198	129	69
<a href="#">Motor Vehicle Theft</a>	11	8	3
<a href="#">Other Assaults</a>	222	162	60
<a href="#">Arson</a>	7	6	1
<a href="#">Forgery &amp; Counterfeiting</a>	1	0	1
<a href="#">Fraud</a>	2	2	0
<a href="#">Embezzlement</a>	0	0	0
<a href="#">Stolen Property: Buying, Receiving, Possessing</a>	7	3	4
<a href="#">Vandalism</a>	99	85	14
<a href="#">Weapons: Carrying, Possessing, etc.</a>	22	20	2
<a href="#">Prostitution &amp; Commercialized Vice</a>	0	0	0
<a href="#">Sex Offenses</a>	15	15	0
<a href="#">Drug Abuse Violations</a>	125	110	15
<a href="#">Gambling</a>	0	0	0
<a href="#">Offenses Against Family &amp; Children</a>	0	0	0
<a href="#">Driving Under the Influence</a>	25	18	7
<a href="#">Liquor Laws</a>	317	217	100
<a href="#">Drunkenness</a>	0	0	0
<a href="#">Disorderly Conduct</a>	41	29	12
<a href="#">All Other Offenses (Except Traffic)</a>	221	169	52
<a href="#">Curfew &amp; Loitering</a>	8	6	2
<a href="#">Runaways</a>	17	4	13
<b>Total</b>	<b>1,417</b>	<b>1,054</b>	<b>363</b>

**Referral:** Number of juveniles referred to the juvenile justice system.

**Diversion:** Number of juveniles formally diverted by a juvenile community corrections officer (JCCO).

**Adjudication:** Number of juveniles found guilty by a court of law.

## ACKNOWLEDGEMENTS

### ***Author***

William Ethridge, Muskie School Public Policy & Management Graduate Student

### ***Research Supervisor***

Mark Rubin, Research Associate, Muskie School of Public Service

### ***SAC Staff Contributor (Juvenile Statistics)***

Becky Noreus, Research Analyst, Muskie School of Public Service

### ***Editors***

Carmen Dorsey, Director, Muskie School of Public Service Justice Policy Program

George Shaler, Research Associate, Muskie School of Public Service

### ***Format and Design***

Sheri Moulton, Project Assistant, Muskie School of Public Service

### ***Special thanks to the Maine Statistical Analysis Center Advisory Group***

Roxy Hennings, CQI Director, Division of Juvenile Services, Maine Department of Corrections

Denise Lord, Deputy Commissioner, Maine Department of Corrections

Janet Joyeux, Deputy Commissioner, Maine Department of Public Safety

Barry Stoodley, Associate Commissioner of Juvenile Services, Maine Department of Corrections

Paul Vestal, Chair, Maine Criminal Justice Commission

Sherry Wilkins, Court Management Analyst, Maine Administrative Office of the Courts

### ***Attribution***

The Maine County Profile Justice Data was created under the auspices of the State Justice Statistics Program, Bureau of Justice Statistics (BJS), Department of Justice (DOJ). Funding was provided by BJS Grant 2008-BJ-CX-K034. The opinions, findings, and conclusions expressed in this publication are those of the authors and do not necessarily reflect the view of the Department of Justice.

All data included in the criminal justice highlights and the corresponding charts and tables was derived from the [2008 Maine Crime and Justice Data Book](#) and the [Maine Department of Public Safety](#) and the [Maine Department of Corrections Juvenile Recidivism Report](#).

Updated: 12/09

ABOUT THE UNIVERSITY OF SOUTHERN MAINE (USM)  
MUSKIE SCHOOL OF PUBLIC SERVICE

The USM Muskie School of Public Service educates leaders, informs public policy, and strengthens civic life through its graduate degree programs, research institutes and public outreach activities. By making the essential connection between research, practice, and informed public policy, the School is dedicated to improving the lives of people of all ages, in every county in Maine and every state in the nation.

*This report is available on the Justice Policy Program Website:*  
<http://muskie.usm.maine.edu/justiceresearch>