



## A Message from the Dean

Something quickly jumps out to even a casual observer of the Muskie School's day-to-day labors. Everywhere one looks one finds another project deeply embedded in the community – a continuing conversation with the city of Portland on its emerging creative

economy; a strategic planning project in Cumberland County to organize public investments over the next decade; or a statewide pre-school professional development effort to enhance a community's capacity to care for its youngest citizens.

There is rich evidence of the School's dedication to community engagement in all of our centers, institutes and academic programs. Every aspect of the School – its teaching, its scholarship, and its public service – is shaped by an intention to

enhance our knowledge of how best to practice public service as a key contribution to our constant search for a fair and civil society.

For more than 200 years, the Maine town meeting has stood as an icon of the engaged community, a valued institution too frequently threatened by our hectic, transient life styles. Yet this simple symbol of the civil society still calls each of us to our responsibility for constructive citizen involvement. The School's nationally recognized Community Partnerships for Older Adults, featured below, is yet another fine representation of such involvement in an engaged community and of the School's mission in practice.



William H. Foster,  
Interim Dean

## Communities Nationwide Find Unique Ways to Support Older Adults

In May, Community Partnerships for Older Adults (CPFOA), a program of the Robert Wood Johnson Foundation housed at the USM Muskie School, awarded its final round of grants to eight communities to improve long term care and supportive services for at-risk older adults. The four-year, \$750,000 grants will be used to implement plans created during an initial 18-month development phase. The eight communities include: Ann Arbor, Michigan; Fremont, California; Manchester, New Hampshire; Port Angeles, Washington; Culpeper, Virginia; Jacksonville, Florida; Oak Park, Illinois; and Waynesville, North Carolina.

The CPFOA program encourages organizations and agencies that support older adults at the local level to form "community partnerships" and work together to develop innovative, community-wide approaches to long term care improvements.

"These grantees reflect the variety of communities across the country—rural, suburban and urban—and are similar in their vision of working in partnership and finding unique ways for older adults to remain in their homes and neighborhoods as they continue to live full, independent lives," said Elise J. Bolda, Ph.D., CPFOA's national program director and Muskie School professor.

To date, community partnerships supported by CPFOA have developed several innovative approaches to community-based care. In San Francisco, the Latino Community Partnership used



A senior passes a feather to a young participant during a peace circle facilitated by Connecting Caring Communities, a partnership in Milwaukee.

research revealing that Latinos (the city's second largest minority), particularly seniors and adults with disabilities, were not receiving services proportionate to their population size and recommended a public outreach campaign. One immediate result of their report was an increase in bilingual staff at public agencies.

Connecting Caring Communities (CCC), a partnership in Milwaukee, improved relations and overcame generational and cultural barriers between older and younger people in two neighborhoods by hosting facilitated discussions where participants addressed misunderstandings and shared their experiences and perceptions with one another. CCC plans to expand the "Peace Making Circles" program and offer a four-day training program to teach people how to facilitate circles on their own.

*continued*

## 2006 Muskie School Graduates Honored

At a May 11 reception, the Muskie School paid tribute to the 2006 graduating class, including 33 students from the Community Planning and Development, Health Policy and Management, and Public Policy and Management (PPM) programs. The event featured guest speaker, **Valerie Landry**, former Maine Commissioner of Labor and PPM alum, and acknowledged students for their achievements.



2006 graduates Karen Faiman and Travis Cummings

**Travis Cummings** (PPM '06) was awarded the Muskie Student Award for his outstanding contribution to the Muskie School community as the chair of the Muskie Student Organization.

**Karen Faiman** (PPM '06) received the Dean's Award for exemplifying leadership, commitment to public service and School ideals.

Nominees to the national honor society Phi Kappa Phi included **Faiman, Margaret Jones** (PPM '06) and **Thomas Keating** (HPM '06).

Other examples of successful partnership ventures include: the Boston Police Department, a member of the CPFOA Boston Partnership for Older Adults, has developed police training programs to raise awareness about crime against seniors; the CPFOA partnership Aging Atlanta has spearheaded a first-of-its-kind "senior living" zoning district to make housing more suitable for older adults; and the CPFOA Maui Long Term Care Partnership developed curricula to prepare high school students for jobs in long term care.

"There is no one-size-fits-all program," said Jane Isaacs Lowe, Ph.D., senior program officer at the Robert Wood Johnson Foundation. "Each of these communities is addressing the unique needs of its older adults."

While this is the final round of competitive grants from CPFOA, "we expect the work by these partnerships to serve as a catalyst," said Bolda. "The cornerstone of this program is to inspire communities to teach and learn from one another." More information about CPFOA and the partnerships is available on the Web site [www.cpfoa.org](http://www.cpfoa.org).

---

## Student Capstones Impact State Policy

When choosing her capstone (the final paper for Muskie School students), Lillian Kerr Haversat wanted to do something that would do more than sit on a shelf. She wanted to make a real contribution to state policy. So, when invited to join a team assessing the much-debated merger of the Maine Department of

Health and Human Services (DHHS), she jumped at the chance. "A year down from now, this work will have impact," said Haversat.

This spring, Professor Michel Lahti, a research faculty member in the Muskie School's Institute for Public Sector Innovation (IPSI), gave nine students a chance to work with staff on projects for state government. "I am very grateful to DHHS for their willingness to engage with students," said Lahti. "This partnership gave a diverse group of students, including a police officer, a mortgage broker, a private business owner, and nonprofit administrators, a chance to contribute their experience and classroom skills to important research helping shape state policy."

The first team, including Haversat, Geoff Heckman, Gregory Stone and Mark Waltz, assisted Muskie School staff in an exploratory research project that identified key areas and some measures for DHHS to use in assessing the progress of the merger of two legacy agencies. The legislature has required monitoring of this process. The students studied similar mergers in other states and nations, and conducted 60 interviews with state agency personnel.

A second team, including Jennifer Babich, Liz Baker, Vanessa Bell and Justin Gifford, developed recommendations for DHHS for the implementation of a new policy involving children in foster care. Subsidized legal guardianships transfer legal responsibility for a minor child from the state to a private caregiver. In many states, this policy accelerates finding a permanent home for foster children. The team reviewed policies and research on this topic from other states, and interviewed court officials, state agency managers, community-based providers and parents to identify issues that could be used to monitor the policy's effectiveness.

For her capstone, Guinevere Twitchell did a case study on how policy is being formulated to enhance quality in child care services. Twitchell worked with program specialists at DHHS who are developing criteria for a state-wide rating system that will be piloted this fall. Through an extensive literature review, focus groups with parents and providers across Maine, and interviews with child care specialists in other states, she developed a set of indicators that may be used to monitor programs state-wide.

"The results of these capstone projects are critical additions to the School's larger body of research and we hope they will help DHHS make informed decisions about new policies and practices related to Maine children and families," said Lahti. For more information on the Muskie School's work in these areas, please contact Professor Michel Lahti at [mlahti@usm.maine.edu](mailto:mlahti@usm.maine.edu).

---

## Colgan Explores U.S. Ocean Economy

To encourage more effective coastal and ocean management, policymakers and environmentalists often point out that most U.S. residents live on or near the coast. Everyone wants to live by the water, right? No, not everyone. In fact, population and housing growth over the last decade has shifted away from the shoreline. While coastal population growth remains important, other changes are perhaps more significant. To shed light on the issue, Muskie Professor Charlie Colgan has been looking deeper into the rela-

tionship between coastal population growth and the economy, and its effect on natural resources.

This summer, Colgan completes a four-year research fellowship with the U.S. Bureau of Labor Statistics where he set up a system—the first nationally comprehensive time series data—to track ocean-related economic activity. Among several findings, Colgan has discovered that, contrary to popular belief, residential growth on the coast has not outpaced the rest of the country. In fact, it has remained proportional to overall population growth.

This information is critical to Colgan's work as chief economist for the National Ocean Economic Program (NOEP), housed at California State University at Monterey Bay, where he works with states including California, Florida and Ohio to assess the value of their relationships to the ocean and Great Lakes. NOEP has also started forecasting the ocean economy and evaluating the effects of such events as hurricanes.

In a paper prepared for the 2003 U.S. Commission on Ocean Policy that set the direction for his current work, Colgan highlighted other key trends he has uncovered. Higher coastal density means more people per square mile and more negative effects on the environment. The ocean economy, comprised of the living resources, minerals, construction, transportation, and tourism and recreation sectors, grew slightly faster than the national economy in last decade. Tourism and recreation, however, was the only sector to see job growth; the others declined.

"These trends have serious implications for protecting our oceans," said Colgan. "With a better idea of what, where and how change is occurring, policymakers can target their resources more effectively."

Statistics in this article are available from the NOEP Web site at [www.oceaneconomics.org](http://www.oceaneconomics.org).

---

## Muskie Garden Party Honors Catherine Baron

On June 21, the School hosted the first annual Muskie School Garden Party to support the Catherine A. Baron Endowment and a garden and bench in Baron's memory at the School's new building.

The event, held at the Stone House Conference Center in Freeport, was attended by over 110 family, friends and staff. More than \$21,000 was raised through a silent auction and other donations.

The Baron Endowment will support professional education for classified and entry-level professional staff at the Muskie School. An anonymous donor will match the \$20,000 goal for the Baron Endowment, establishing a second fund for professional staff.

For 30 years, Baron held several key administrative positions at the Muskie School before retiring in 2005. She died last fall in a helicopter accident while vacationing in Hawaii.

The School extends many thanks to the individuals who donated to the silent auction and the Baron Endowment and to the event committee for their hard work and dedication.

---

## Other News

In May, the Muskie School welcomed four new members to the School's Board of Visitors: **Laurie Lachance**, President & CEO of the Maine Development Foundation, **Michael McGovern**, town manager for Cape Elizabeth, **Anne Pringle**, former Portland mayor and city councilor and **Robert Woodbury**, former chancellor of the University of Maine System and former USM president.

The Board of Directors of the Friends of Midcoast Maine has presented its 2006 Annual Smart Growth Award to the DVD "Growing Together: Consensus Building, Smart Growth and Community Change" that was released by the Muskie School's **New England Environmental Finance Center** earlier this year.



In July, **Mark Rubin** will present work on adult probation recidivism in Maine to the Illinois Evidence-Based Practices Research Subcommittee and travel to Washington, DC for the National Institute of Justice Conference and co-present "Evidence-Based Practices for Probation: Intermediate Measures and Results."

**Elise Scala** has been selected nationally as one of 24 professionals in the field of workforce development to be a Marano Fellow at the Sector Skills Academy. The Academy is a joint project of the Aspen Institute's Workforce Strategies Initiative, Public/Private Ventures and the National Network of Sector Partners (NNSP) and includes three multi-day workshops.

**George Shaler** co-presented at the annual meeting of the National Assembly on School-Based Health Care (SBHC) in Portland, Oregon on June 16. The presentation focused a pilot project to use motivational interviewing to promote and track behavioral change in nine Maine school-based health care settings.

**Patrick Damon**, a 1997 graduate of the Muskie School's Public Policy and Management program, died on June 15 of an apparent heart attack while deployed in Afghanistan with the Maine Army National Guard.

Damon began his career in Maine state government in 1994, serving most recently as the administrative director of the Maine Public Utilities Commission. Prior to that, he served as a policy advisor to four speakers of the Maine House of Representatives, first as a legislative aide to Elizabeth Mitchell, then as senior aide to Stephen Rowe. He was chief of staff for Patrick Caldwell when Michael Saxl was speaker in 2001 and 2002 and continued in that role when Caldwell was speaker in 2003 and 2004.

The Muskie School extends many condolences to his family, friends and colleagues.

# What's Inside

A Message from the Dean  
page 1

Communities Nationwide Find Unique Ways to Support Older Adults  
page 1

2006 Muskie School Graduates Honored  
page 2

Student Capstones Impact State Policy  
page 2

Colgan Explores U.S. Ocean Economy  
page 2 - 3

Muskie School Garden Party Honors Catherine Baron  
page 3

Other News  
page 3

Plans for New Muskie School Home Revealed  
Back page



UNIVERSITY OF  
**SOUTHERN MAINE**

**The Muskie School of Public Service** at the University of Southern Maine offers master's degree programs in community planning and development, health policy and management, and public policy and management, as well as a doctoral degree in public policy. Home to three research institutes and four national research centers, the School's 320 employees conduct projects on a broad range of policy issues that reach all 50 states and each of Maine's 16 counties.

**Update** is a monthly publication of the USM Muskie School released three times each year in hard copy format and electronically during the remaining months. Please direct correspondence and address corrections to:

Jennifer Hutchins  
Communications Coordinator  
USM Muskie School  
P.O. Box 9300  
Portland, ME 04104-9300

207-780-4150  
jhutchin@usm.maine.edu

## Muskie School of Public Service

University of Southern Maine  
PO Box 9300  
Portland, ME 04104-9300

RETURN SERVICE REQUESTED

Nonprofit Org.  
US Postage  
**PAID**  
Portland, ME  
Permit #370

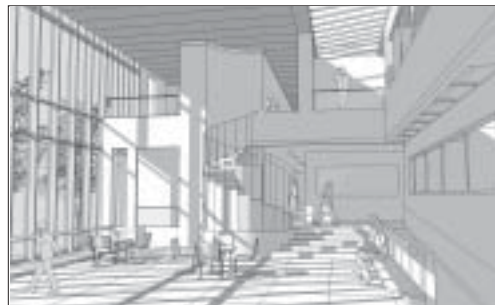
## Plans for New Muskie School Home Revealed

The Muskie School is moving forward on plans for its first official home, scheduled to begin construction later this fall. The School will share the new Wishcamper Center with the Osher Lifelong Learning Institute (OLLI) and be located between the Glickman Family Library and the Abromson Community Education Center on the USM Portland campus.

"This new space will bring the Muskie School's academic and research programs in Portland into one location and will greatly enhance our ability to communicate and collaborate internally and with the greater community," said Interim Dean Bill Foster. The building will include new classrooms, technology for distance education, a research library and flexible meeting rooms for public forums and lectures.



New Muskie School home: Exterior



New Muskie School home: Interior

[www.muskie.usm.maine.edu](http://www.muskie.usm.maine.edu)

The University of Southern Maine shall not discriminate on the grounds of race, color, religion, sex, sexual orientation, national origin or citizenship status, age, disability, or veteran's status in employment, education and all other areas of the University. The University provides reasonable accommodations to qualified individuals with disabilities upon request. Questions and complaints about discrimination in any area of the University should be directed to the executive director, Office of Campus Diversity and Equity, (207) 780-5094, TTY (207) 780-5646.